

New-generation sliding door closers developed with user-friendly technologies.

NITTO KOHKI Sliding Closer

Horizontal For bathroom
NSC-CB

Horizontal **NSC-C**

Inclined **DSC-C**



We propose a new style of door opening/closing.



New sliding closers **DSC-C** (incl (horizontal) series "Innovation a

Long service life

- The control device incorporates a fluid friction resistance, one-way clutch mechanism to ensure secure control, small size, and a long service life.

Light door-opening force

- Since door resistance is low, the door can be opened easily even by elderly citizens, young children, and people with disabilities.

Initial door-opening force at a door weight of 40kg
DSC-C08 type, 6.7N; NSC-C36 type, 5.7N

A large variety of models

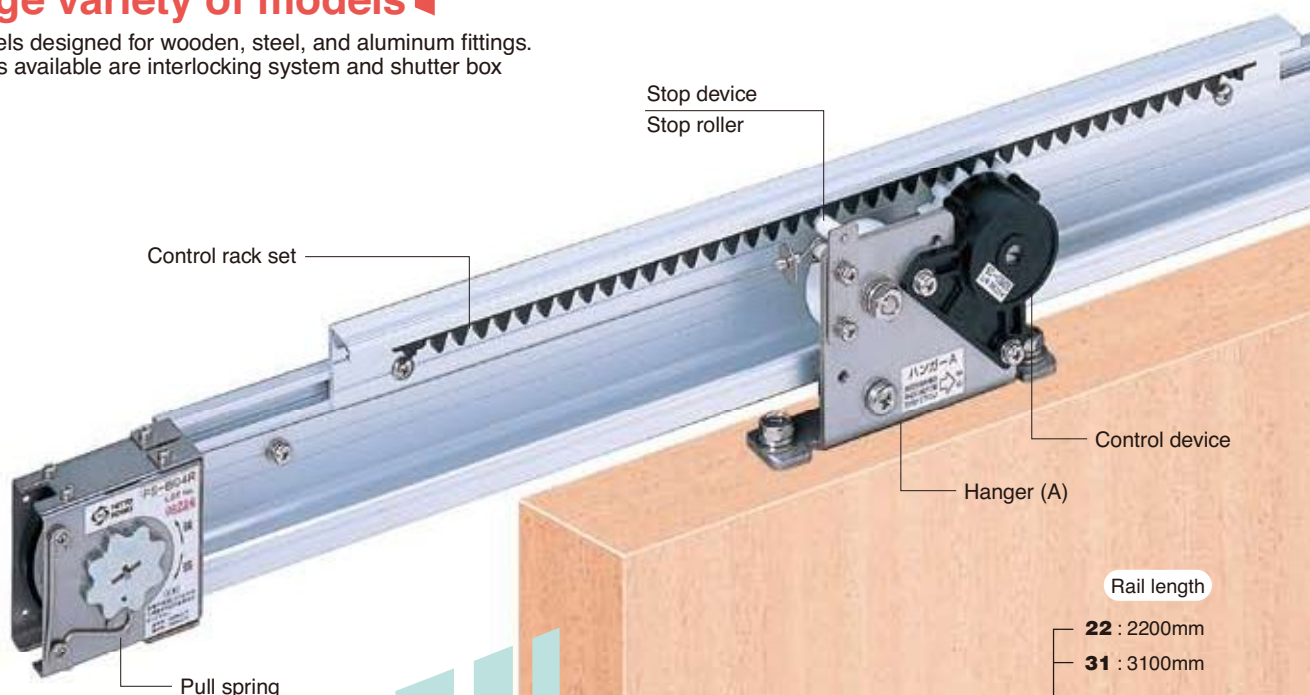
- Many models designed for wooden, steel, and aluminum fittings. The options available are interlocking system and shutter box type.

Easy to install

- The only modifications made on the frame are the making of rail-mounting holes. All parts can be installed on the rail with a screwdriver. The product is therefore easy to install.

Both for right- and left-handed opening types

- The product can be converted between the right- and left-handed opening types by a simple operation.



Release the door, and it will automatically close gently and slowly.



Model

- D** : Inclined
- N** : Horizontal

Door weight

- 3** : 10-30kg
- 6** : 30-60kg (Horizontal)
- 8** : 60-80kg (Horizontal)
- 30-80kg (Inclined)
- 12** : 80-120kg

Pull spring

- 0** : Inclined
- 2** : PS-02
- 3** : PS-03
- 4** : PS-04
- 8** : PS-08

Applicable doors

- CW** : for wooden fittings
- C** : for steel lightweight fittings
- CB** : for lightweight fittings in bathrooms

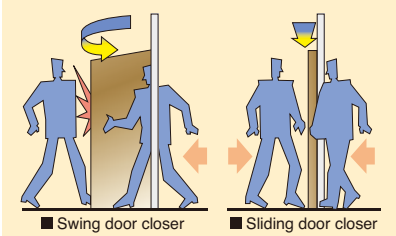
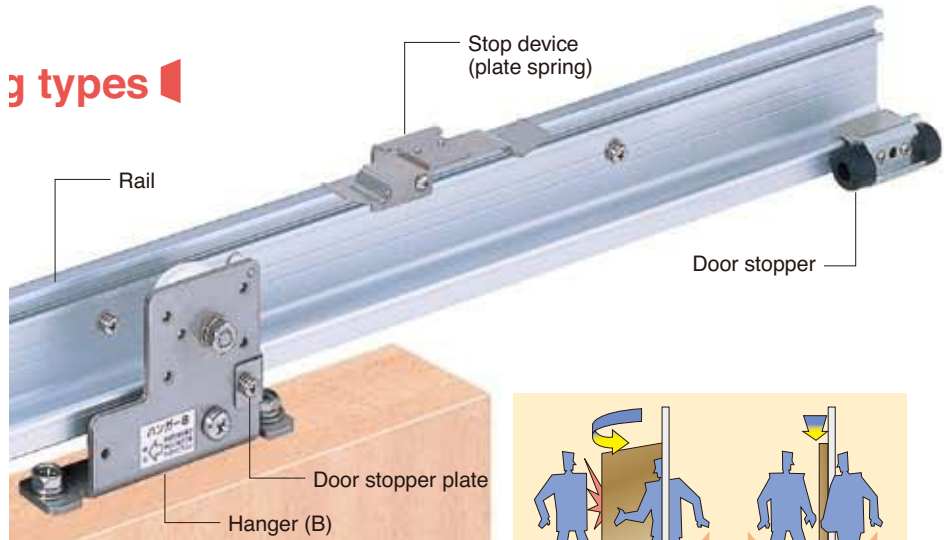
Rail length

- 22** : 2200mm
- 31** : 3100mm



ed) and NSC-C Simplicity"

INDEX



The sliding door closer system eliminates dead space and ensures high safety.

■ Application

● Wooden fittings, inclined **DSC-CW** series

Applicable door	Model	Door weight (kg)	Applicable door width (mm)
Wooden doors	DSC-CW03	10-30	700-1600
	DSC-CW08	30-80	

● Wooden fittings, horizontal **NSC-CW** series

Applicable door	Model	Door weight (kg)	Applicable door width (mm)
Wooden doors	NSC-CW23	10-30	700-1600
	NSC-CW36	30-60	
	NSC-CW48	60-80	

● Steel lightweight fittings, inclined **DSC-C** series

Applicable door	Model	Door weight (kg)	Applicable door width (mm)
Steel doors	DSC-C03	10-30	700-1600
	DSC-C08	30-80	
	DSC-C12	80-120	

● Steel lightweight fittings, horizontal **NSC-C** series

Applicable door	Model	Door weight (kg)	Applicable door width (mm)
Steel doors	NSC-C23	10-30	700-1600
	NSC-C36	30-60	
	NSC-C48	60-80	
	NSC-C812	80-120	

● Lightweight fittings in bathrooms, horizontal type for bathrooms **NSC-CB** series

Applicable door	Model	Door weight (kg)	Applicable door width (mm)
Steel light-weight doors Aluminum doors	NSC-CB23	10-30	700-1600
	NSC-CB36	30-60	
	NSC-CB48	60-80	

Application

2

● Wooden fittings

DSC-CW03/specifications
DSC-CW08/specifications

3•4

DSC-CW03 · 08/Installation diagrams

5•6

NSC-CW23/specifications
NSC-CW36 · 48/specifications

7•8

NSC-CW23 · 36 · 48/Installation diagrams

9•1

● Steel lightweight fittings

DSC-C03 · 08/specifications
DSC-C03 · 08/Installation diagrams

11•

DSC-C012/Installation diagrams

13•

NSC-C23 · 36 · 48/specifications
NSC-C23 · 36 · 48/Installation diagrams

15•

NSC-C812/Installation diagrams

17•

● Option

Single action double Sliding system

19•

Bi-Parting system, SC-W

21•

Free stopper (SFS-A)

23

Back checker

23

Delayed device

23

Maintenance cover

23

● Lightweight fittings in bathrooms

NSC-CB/Installation diagrams

25•

● List of parts

DSC-C012/NSC-C812

27

NSC-CB

28

NSC-C/DSC-C

29

● Q&A on Troubleshooting

30

For wooden fittings, inclined,
with door weights of 10-30kg

DSC-CW03 series



Reliable, Cost Effective, Sliding Doors Closers – Simple to Use & Install

Features

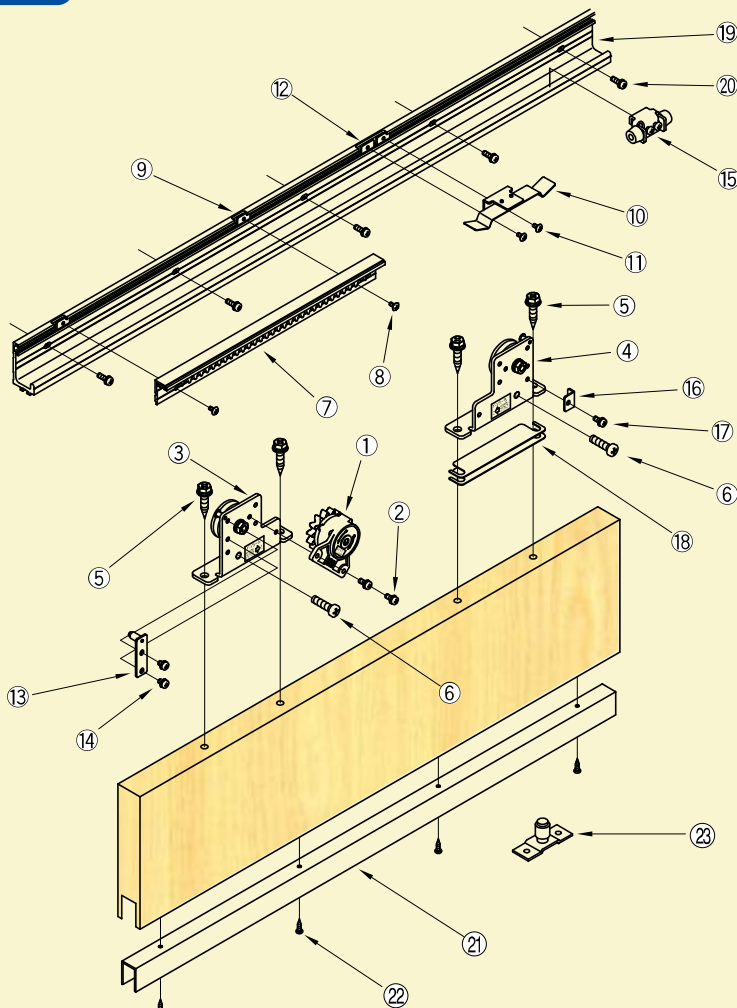
- A standardized set of parts required for inclined wooden fitting types.
(The product comes standard with a guide rail, guide roller, stop device, and other equipment.)
- Coach screws allow the hanger to be attached directly to the door.
- An endless fluid friction resistance system ensures a long life.
- The product can be converted to the right- and left-handed opening types by simple operation.
- It is easy to install with a screwdriver.

Specifications

Model	DSC-CW03-22	DSC-CW03-31
Applicable doors	Weight [kg]	10-30
	Width [mm]	700-1200
		1200-1600
Max. stroke [mm]	1500	
Closing drive system	Rail inclination (3.5/300)	
Controlling system	Fluid friction resistance type	
Controlling time	7-11 seconds (with a door-opening distance of 900mm)	
Initial opening force [N]	2.3-5.4	
Durability	More than 1 million open/close operations	
Rail length [m]	2.2	3.1



Part details



No.	Part	Q'ty	Remark
①	Control device	1	For control device
②	M5 × 12 pan head screw	2	
③	Hanger A	1	For hanger
④	Hanger B	1	
⑤	φ8 × 50 coach screw	4	For door retention
⑥	M8 × 30 pan head screw	2	
⑦	Control rack set	1	For control rack set
⑧	M4 × 8 truss screw	2	
⑨	Plate nut	2	For stop device
⑩	Plate spring	1	
⑪	M4 × 8 truss screw	2	For door stopper
⑫	Plate nut	2	
⑬	Stop roller	1	For door stopper
⑭	M5 × 8 pan head screw	2	
⑮	Door stopper fitting	1	For door stopper
⑯	Door stopper plate	1	
⑰	M5 × 8 pan head screw	1	For rail
⑱	Height adjusting plate (t = 1.0, 0.5)	15+1	
⑲	Rail L = 2200 [L = 3100]	1	For guide rail
⑳	M5 × 16 pan head screw	8[11]	
㉑	φ5 × 30 truss tapping screw	8[11]	For guide rail
㉒	Guide rail L = 1300 [L = 1600]※	1	
㉓	φ4 × 16 pan head tapping screw	5[6]	For guide rail
㉔	Guide roller φ16	1	

※ Guide rail : Rail 2.2m Guide rail 1.3m
Rail 3.1m Guide rail 1.6m

For wooden fittings, inclined,
with door weights of 30-80kg

DSC-CW08_{series}

Reliable, Cost Effective, Sliding Doors Closers – Simple to Use & Install

Features

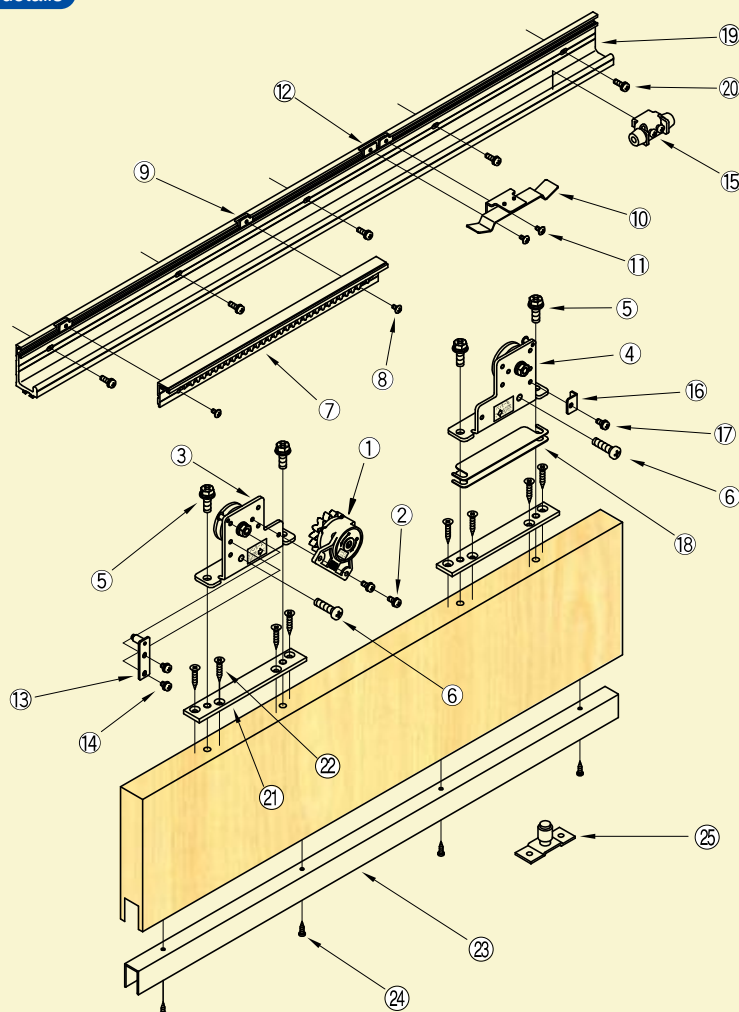
- A standardized set of parts required for inclined wooden fitting types.
(The product comes standard with a guide rail, guide roller, stop device, and other equipment.)
- An endless fluid friction resistance system ensures a long life.
- The product can be converted to the right- and left-handed opening types by simple operation.
- It is easy to install with a screwdriver.

Specifications

Model	DSC-CW08-22	DSC-CW08-31
Applicable doors	Weight [kg]	30-80
	Width [mm]	700-1200
Max. stroke [mm]	1500	
Closing drive system	Rail inclination (3.5/300)	
Controlling system	Fluid friction resistance type	
Controlling time	7-11 seconds (with a door-opening distance of 900mm)	
Initial opening force [N]	5.4-12.5	
Durability	More than 1 million open/close operations	
Rail length [m]	2.2	3.1



Part details

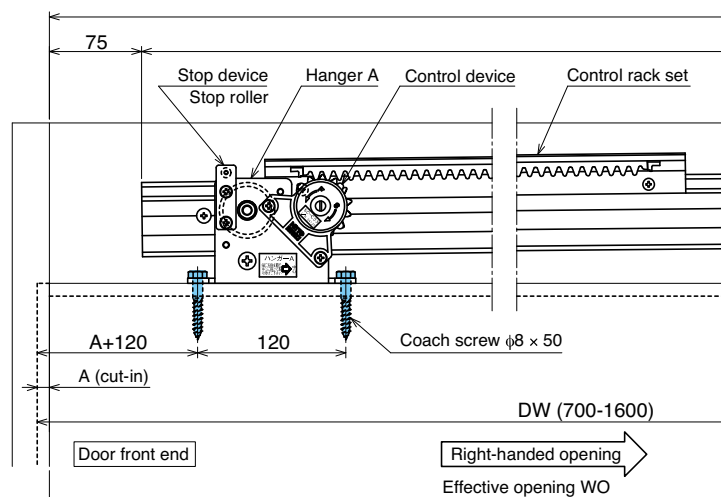
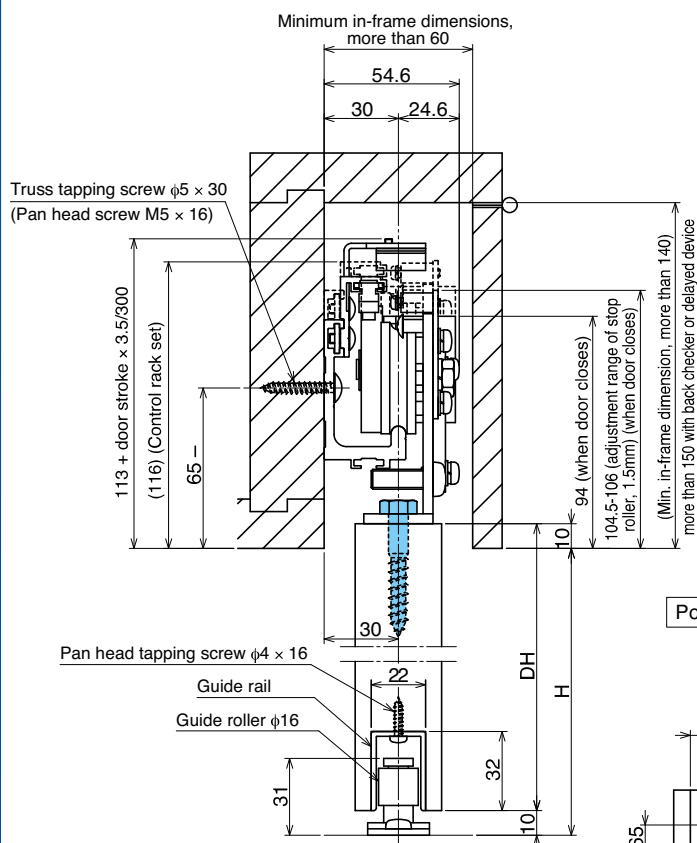


No.	Part	Q'ty	Remark
①	Control device	1	For control device
②	M5 × 12 pan head screw	2	
③	Hanger A	1	For hanger
④	Hanger B	1	
⑤	M8 × 25 hexagon head bolt	2	
	M8 × 30 hexagon head bolt	2	
⑥	M8 × 30 pan head screw	2	For door retention
⑦	Control rack set	1	For control rack set
⑧	M4 × 8 truss screw	2	
⑨	Plate nut	2	
⑩	Plate spring	1	For stop device
⑪	M4 × 8 truss screw	2	
⑫	Plate nut	2	
⑬	Stop roller	1	
⑭	M5 × 8 pan head screw	2	For door stopper
⑮	Door stopper fitting	1	
⑯	Door stopper plate	1	
⑰	M5 × 8 pan head screw	1	For rail
⑱	Height adjusting plate (t = 1.0, 0.5)	15+1	
⑲	Rail L = 2200 [L = 3100]	1	
⑳	M5 × 16 pan head screw	8[11]	For rail
	φ5 × 30 truss tapping screw	8[11]	
㉑	Wooden door plate	2	For wooden door plate
㉒	φ5 × 30 flat head tapping screw	8	For guide rail
㉓	Guide rail L = 1300 [L = 1600]※	1	
㉔	φ4 × 16 pan head tapping screw	5[6]	
㉕	Guide roller φ16	1	

※ Guide rail : Rail 2.2m Guide rail 1.3m
Rail 3.1m Guide rail 1.6m

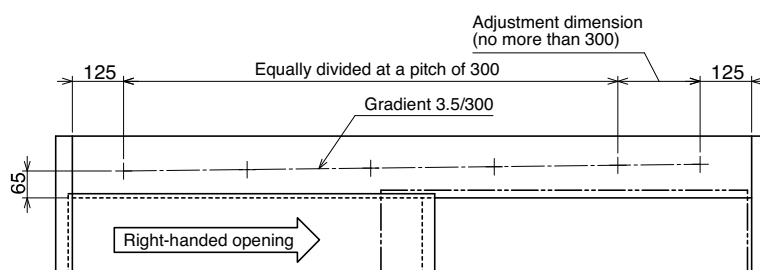
Installation diagrams

DSC-CW03



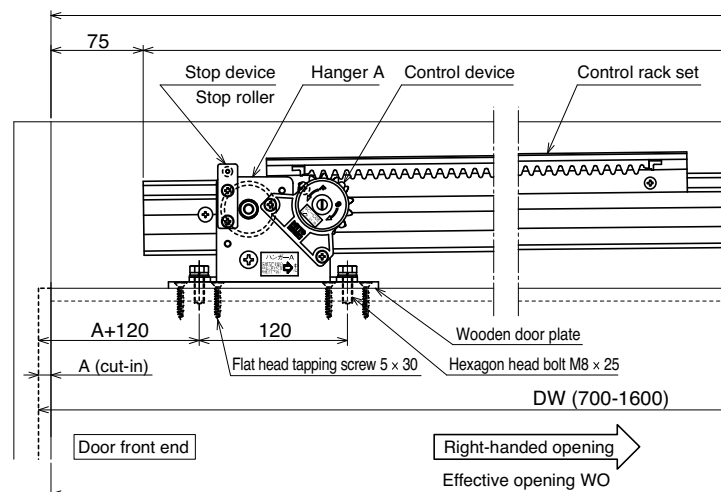
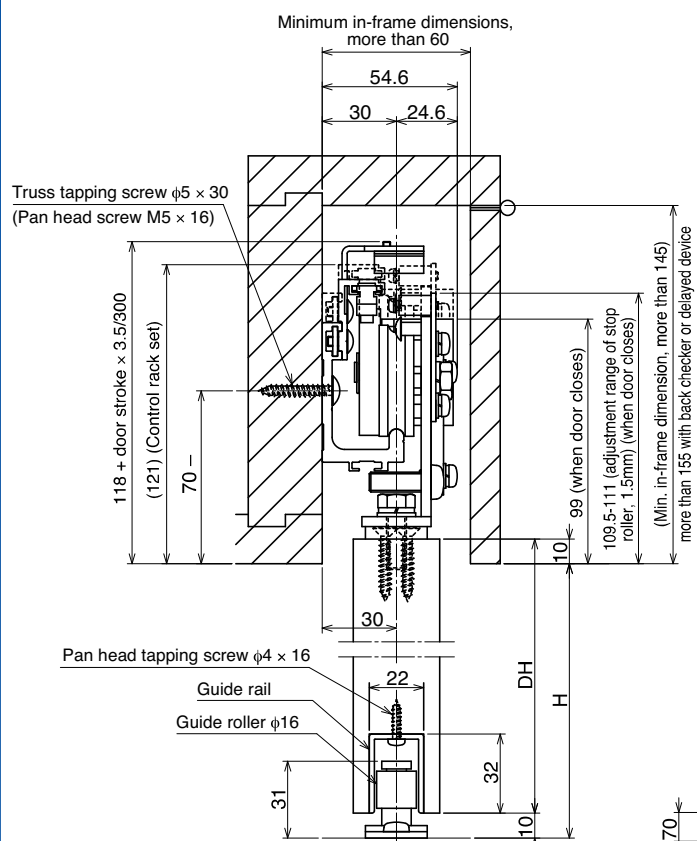
Position diagram for rail-mounting holes (as viewed from inspection panel)

*When handling a steel frame, tap M5 holes ($P = 0.8$).



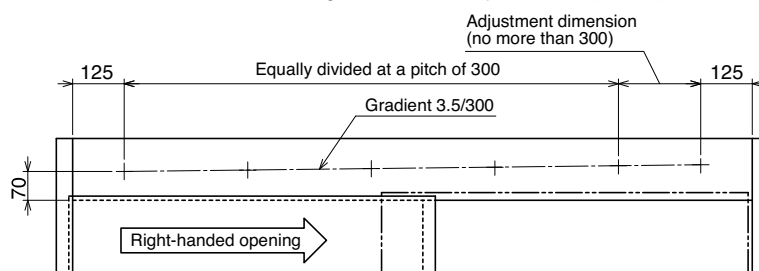
Installation diagrams

DSC-CW08

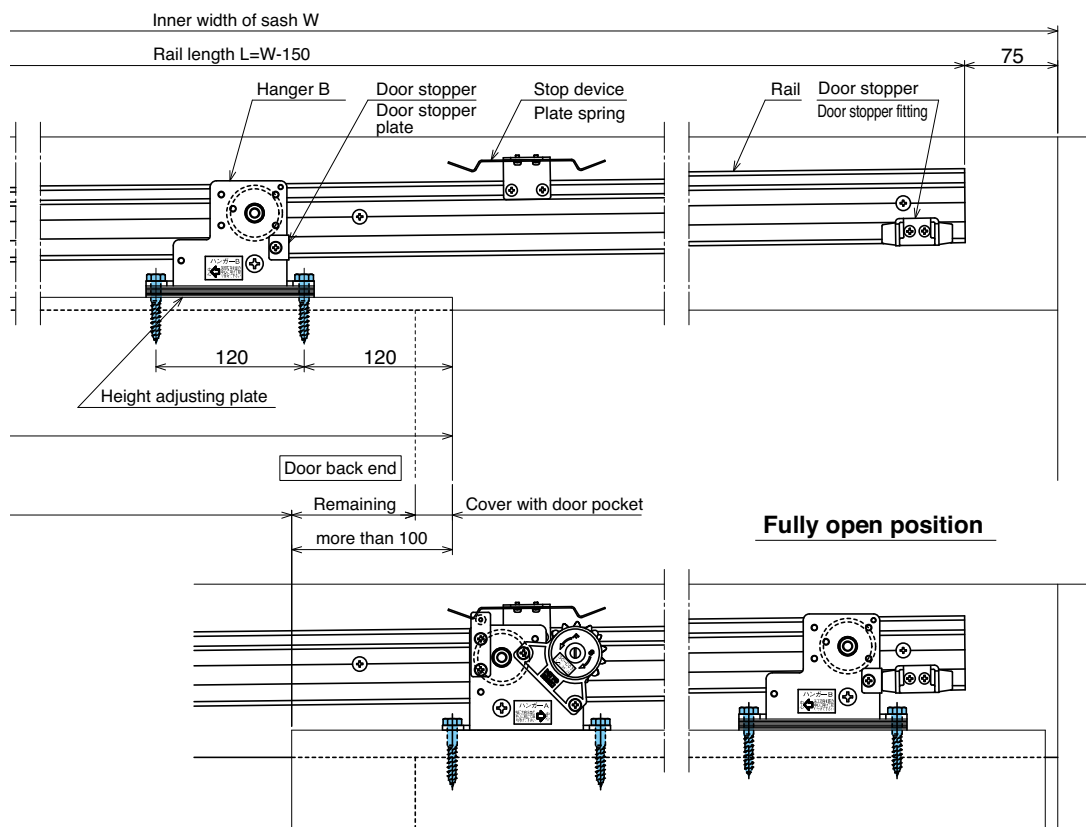


Position diagram for rail-mounting holes (as viewed from inspection panel)

*When handling a steel frame, tap M5 holes ($P = 0.8$).



DSC-CW03

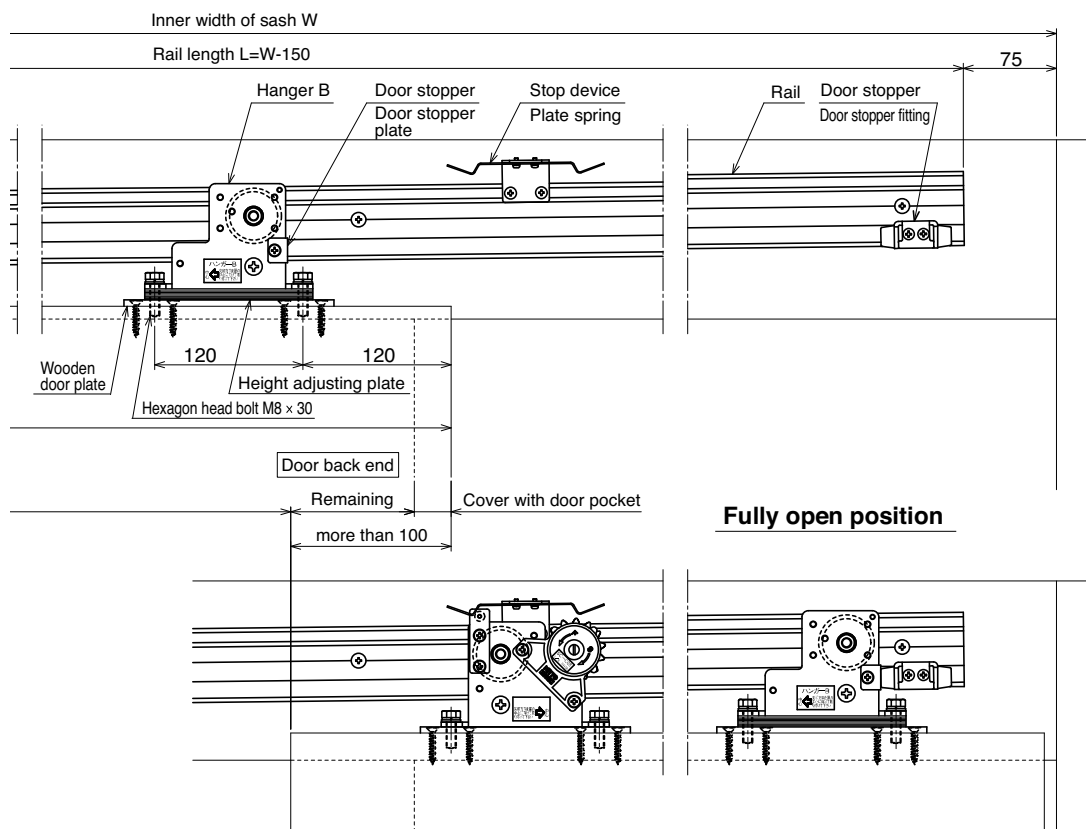


Number of height adjusting plates (reference)

Door width [mm]	No. of plates used
700-800 or less	6 pcs.
800-900 or less	7 pcs.
900-1000 or less	8 pcs.
1000-1100 or less	9 pcs.
1100-1200 or less	10 pcs.
1200-1300 or less	12 pcs.
1300-1400 or less	13 pcs.
1400-1500 or less	14 pcs.
1500-1600 or less	15 pcs.

1. These diagrams represent a right-handed opening type. The left-handed opening type is a mirror image of these diagrams.
2. Door orientation is right-handed if the door is opened rightwards as viewed from the inspection panel, and left-handed if the door is opened leftwards.
3. The hanger is installed directly with coach screws.

DSC-CW08



Number of height adjusting plates (reference)

Door width [mm]	No. of plates used
700-800 or less	6 pcs.
800-900 or less	7 pcs.
900-1000 or less	8 pcs.
1000-1100 or less	9 pcs.
1100-1200 or less	10 pcs.
1200-1300 or less	12 pcs.
1300-1400 or less	13 pcs.
1400-1500 or less	14 pcs.
1500-1600 or less	15 pcs.

1. These diagrams represent a right-handed opening type. The left-handed opening type is a mirror image of these diagrams.
2. Door orientation is right-handed if the door is opened rightwards as viewed from the inspection panel, and left-handed if the door is opened leftwards.

For wooden fittings, horizontal,
with door weights of 10-30kg

NSC-CW23 series

Reliable, Cost Effective, Sliding Doors Closers – Simple to Use & Install

Features

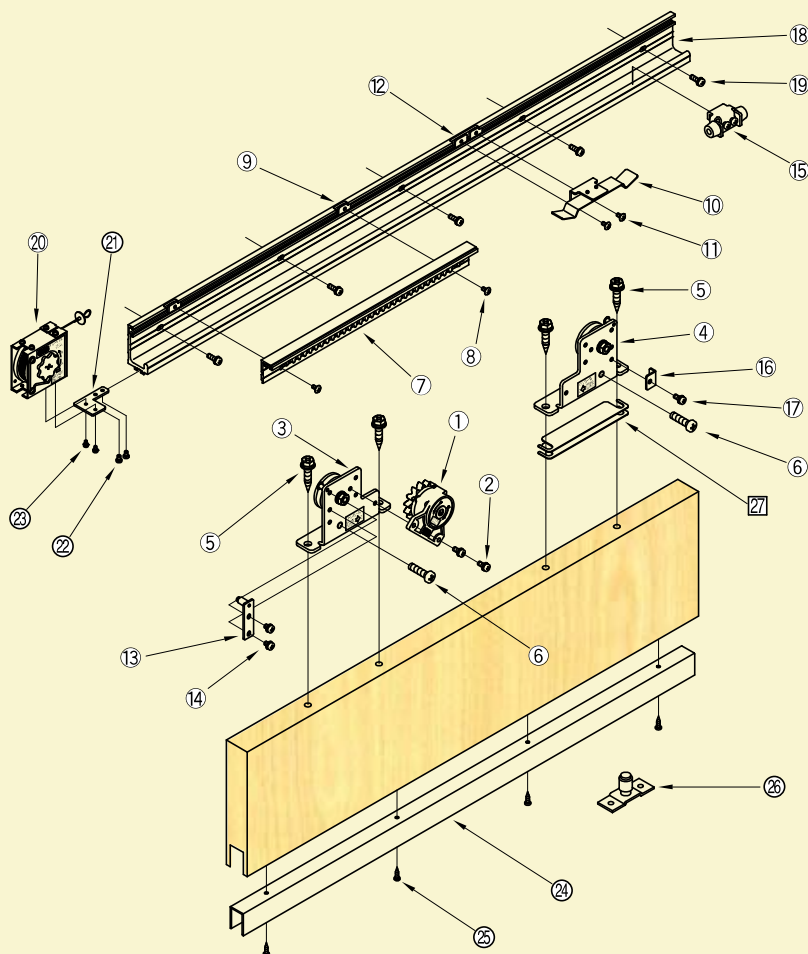
- A standardized set of parts required for horizontal wooden fitting types.
(The product comes standard with a guide rail, guide roller, stop device, and other equipment.)
- Coach screws allow the hanger to be attached directly to the door.
- An endless fluid friction resistance system ensures a long life.
- The product can be converted to the right- and left-handed opening types by simple operation.
- It is easy to install with a screwdriver.

Specifications

Model	NSC-CW23-22	NSC-CW23-31
Applicable doors	Weight [kg]	10-30
	Width [mm]	700-1200
		1200-1600
Max. stroke [mm]	1500	
Closing drive system	Spiral spring type	
Controlling system	Fluid friction resistance type	
Controlling time	7-11 seconds (with a door-opening distance of 900mm)	
Initial opening force [N]	3.5-4.6	
Durability	more than 1 million open/close operations	
Lead-in spring	PS-02	
Rail length [m]	2.2	3.1



Part details



No.	Part	Q'ty	Remark
①	Control device	1	For control device
②	M5 × 12 pan head screw	2	
③	Hanger A	1	
④	Hanger B	1	For hanger
⑤	φ8 × 50 coach screw	4	
⑥	M8 × 30 pan head screw	2	For door retention
⑦	Control rack set	1	
⑧	M4 × 8 truss screw	2	For control rack set
⑨	Plate nut	2	
⑩	Plate spring	1	
⑪	M4 × 8 truss screw	2	
⑫	Plate nut	2	For stop device
⑬	Stop roller	1	
⑭	M5 × 8 pan head screw	2	
⑮	Door stopper fitting	1	
⑯	Door stopper plate	1	For door stopper
⑰	M5 × 8 pan head screw	1	
⑱	Rail L = 2200 [L = 3100]	1	
⑲	M5 × 16 truss screw	8[11]	For rail
⑲	φ5 × 30 truss tapping screw	8[11]	
⑳	Pull spring	1	
㉑	Pull spring fitting	1	For pull spring
㉒	M4 × 5 pan head screw	2	
㉓	M3 × 8 pan head screw	2	
㉔	Guide rail L = 1300 [L = 1600]※	1	For guide rail
㉕	φ4 × 16 pan head tapping screw	5[6]	
㉖	Guide roller φ16	1	
㉗	Height adjusting plate (t=1.0, 0.5)	—	Option

※ Guide rail : Rail 2.2m Guide rail 1.3m
Rail 3.1m Guide rail 1.6m

For wooden fittings, horizontal,
with door weights of 30-60kg and 60-80kg

NSC-CW36·48 series

**Reliable, Cost Effective, Sliding Doors
Closers – Simple to Use & Install**

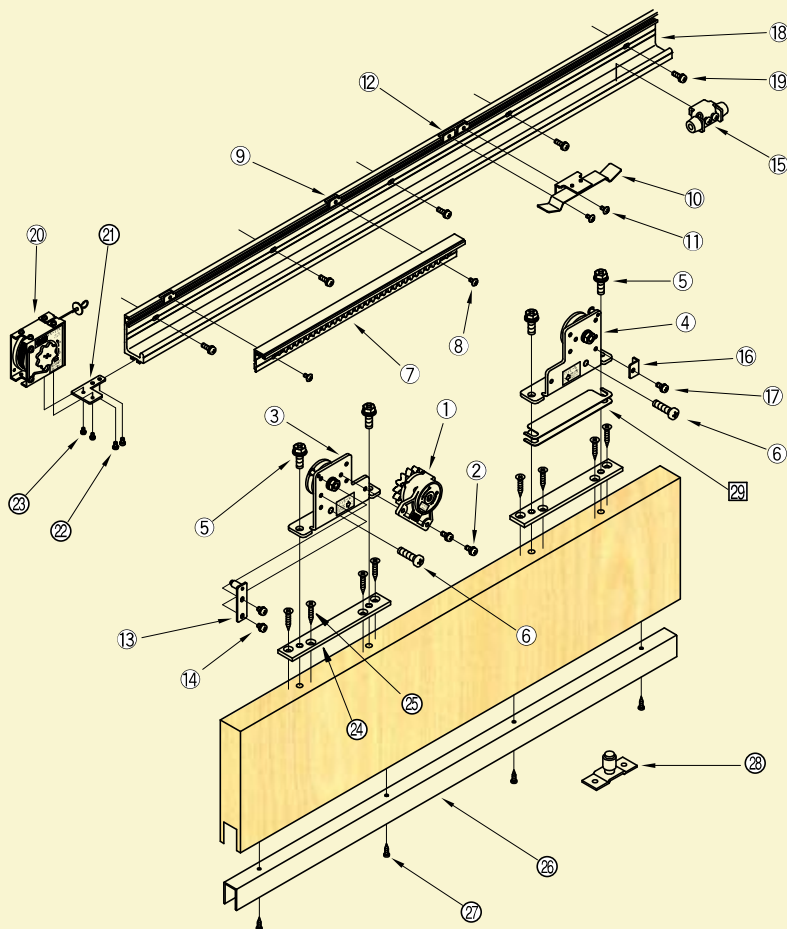
Features

- A standardized set of parts required for horizontal wooden fitting types.
(The product comes standard with a guide rail, guide roller, stop device, and other equipment.)
- An endless fluid friction resistance system ensures a long life.
- The product can be converted to the right- and left-handed opening types by simple operation.
- It is easy to install with a screwdriver.

Specifications

Model		NSC-CW36-22	NSC-CW36-31	NSC-CW48-22	NSC-CW48-31
Applicable doors	Weight [kg]	30-60		60-80	
	Width [mm]	700-1200	1200-1600	700-1200	1200-1600
Max. stroke [mm]		1500			
Closing drive system		Spiral spring type			
Controlling system		Fluid friction resistance type			
Controlling time		7-11 seconds (with a door-opening distance of 900mm)			
Initial opening force [N]		4.7-6.9		7.0-8.0	
Durability		more than 1 million open/close operations			
Pull spring		PS-03		PS-04	
Rail length [m]		2.2	3.1	2.2	3.1

Part details

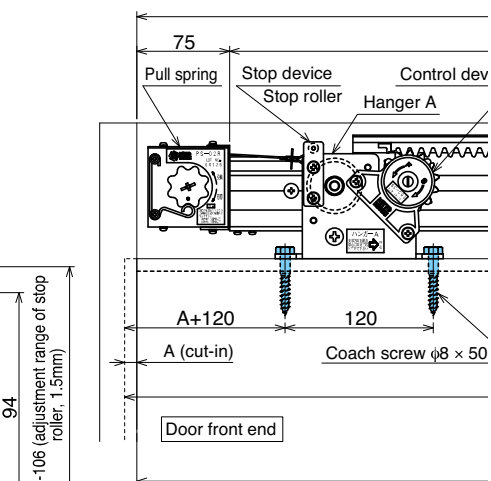
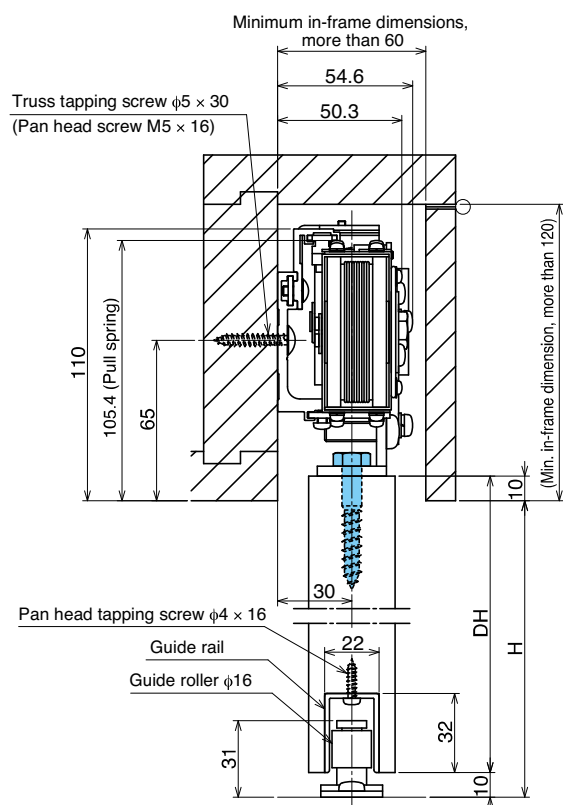


No.	Part	Q'ty	Remark
①	Control device	1	For control device
②	M5 × 12 pan head screw	2	
③	Hanger A	1	For hanger
④	Hanger B	1	
⑤	M8 × 25 hexagon head bolt	4	For door retention
⑥	M8 × 30 pan head screw	2	
⑦	Control rack set	1	For control rack set
⑧	M4 × 8 truss screw	2	
⑨	Plate nut	2	For stop device
⑩	Plate spring	1	
⑪	M4 × 8 truss screw	2	
⑫	Plate nut	2	
⑬	Stop roller	1	For door stopper
⑭	M5 × 8 pan head screw	2	
⑮	Door stopper fitting	1	
⑯	Door stopper plate	1	For door stopper
⑰	M5 × 8 pan head screw	1	
⑱	M5 × 8 pan head screw	1	
⑲	Rail L = 2200 [L = 3100]	1	For rail
⑳	M5 × 16 truss screw	8[11]	
㉑	φ5 × 30 truss tapping screw	8[11]	
㉒	Pull spring	1	For pull spring
㉓	Pull spring fitting	1	
㉔	M4 × 5 pan head screw	2	
㉕	M3 × 8 pan head screw	2	For wooden door plate
㉖	Wooden door plate	2	
㉗	φ5 × 30 flat head tapping screw	8	For guide rail
㉘	Guide rail L = 1300 [L = 1600]※	1	
㉙	φ4 × 16 pan head tapping screw	5[6]	
㉚	Guide roller φ16	1	
㉛	Height adjusting plate (t=1.0, 0.5)	—	

※ Guide rail : Rail 2.2m Guide rail 1.3m
Rail 3.1m Guide rail 1.6m

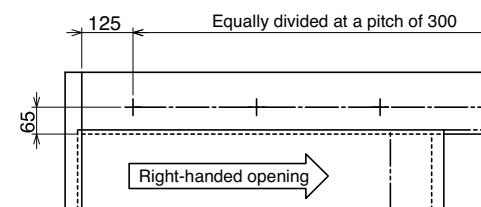
Installation diagrams

NSC-CW23



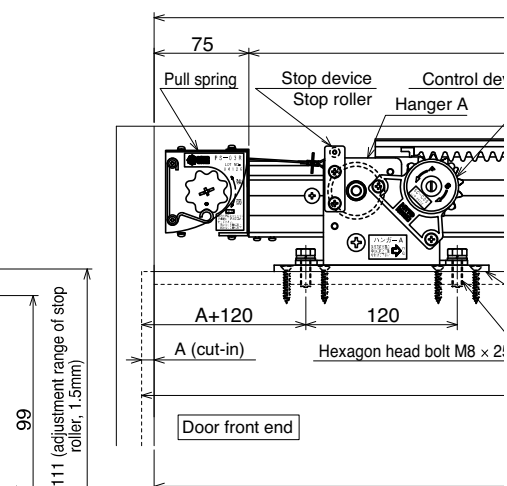
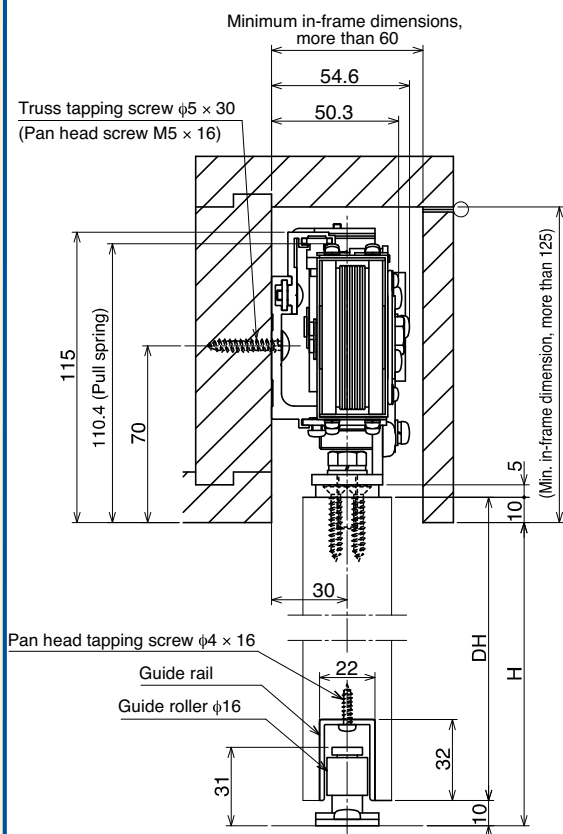
Position diagram for rail-mounting holes
(as viewed from inspection panel)

*When handling a steel frame,
tap M5 holes (P = 0.8).



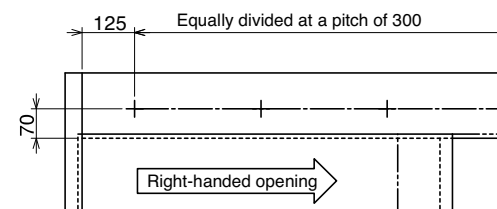
Installation diagrams

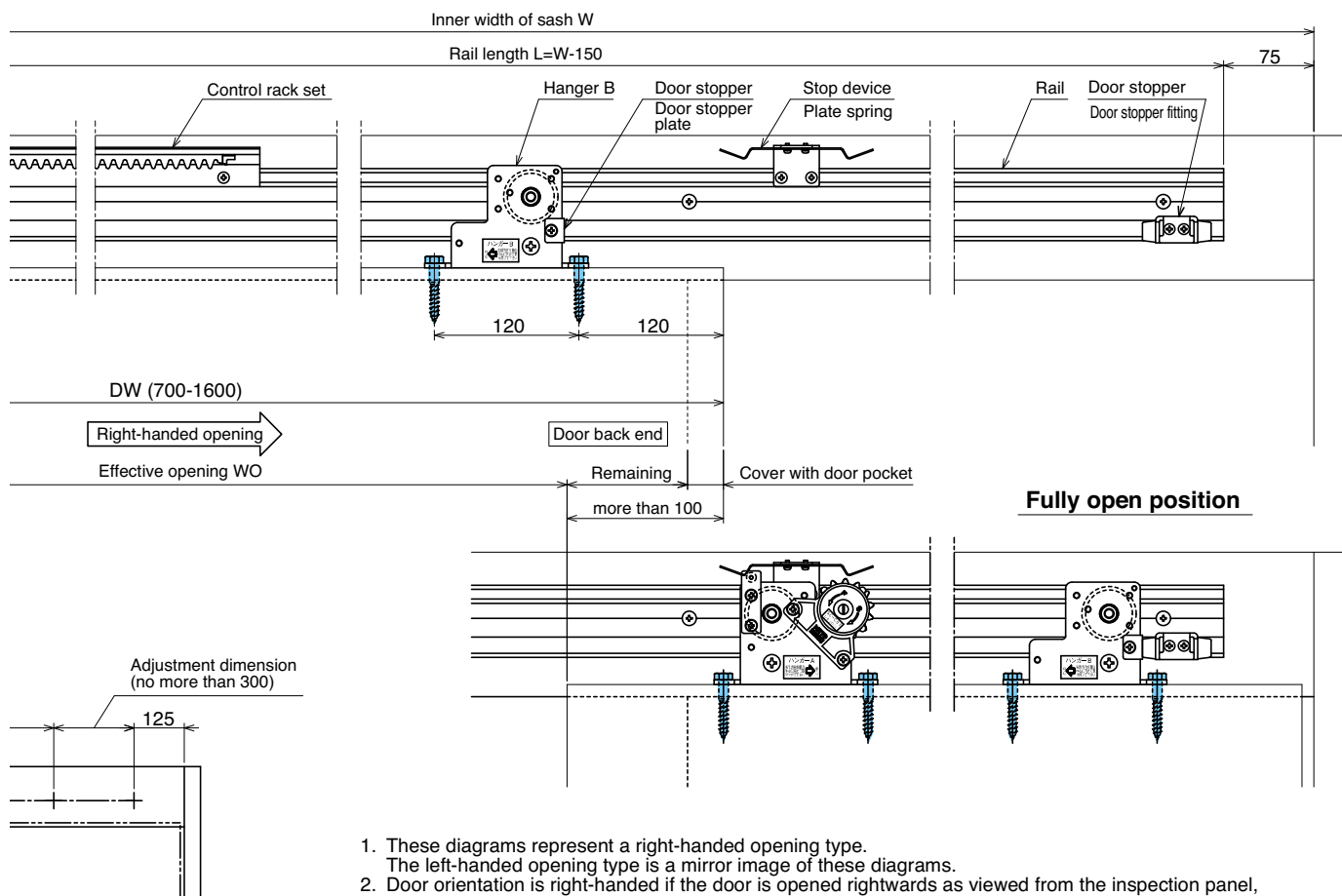
NSC-CW36 · 48



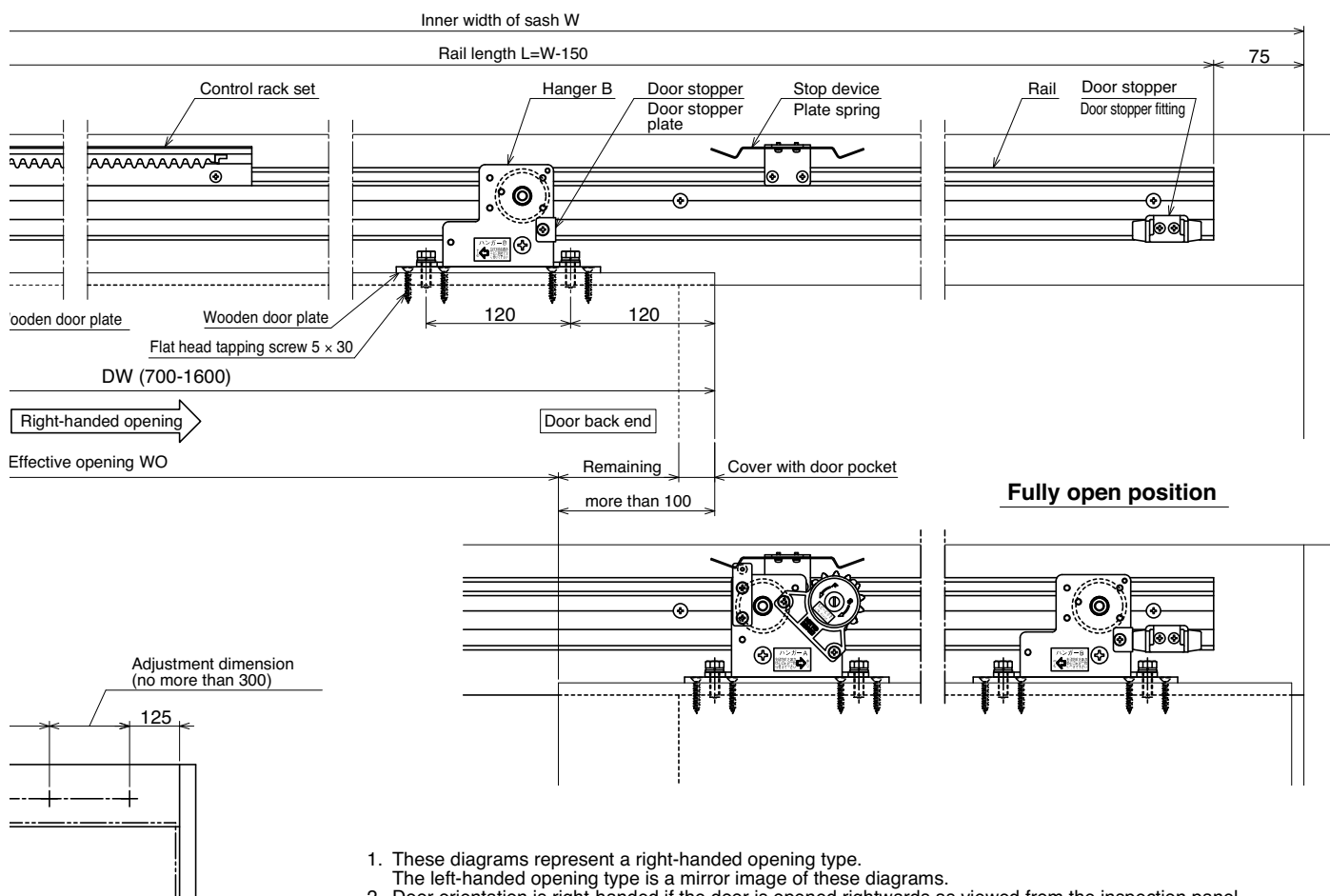
Position diagram for rail-mounting holes
(as viewed from inspection panel)

*When handling a steel frame,
tap M5 holes (P = 0.8).





1. These diagrams represent a right-handed opening type.
The left-handed opening type is a mirror image of these diagrams.
2. Door orientation is right-handed if the door is opened rightwards as viewed from the inspection panel, and left-handed if the door is opened leftwards.
3. The hanger is installed directly with coach screws.



1. These diagrams represent a right-handed opening type.
The left-handed opening type is a mirror image of these diagrams.
2. Door orientation is right-handed if the door is opened rightwards as viewed from the inspection panel, and left-handed if the door is opened leftwards.

For steel lightweight fittings, inclined,
with door weights of 10-30kg and 30-80kg

DSC-C03·08 series

Reliable, Cost Effective, Sliding Doors Closers – Simple to Use & Install

Features

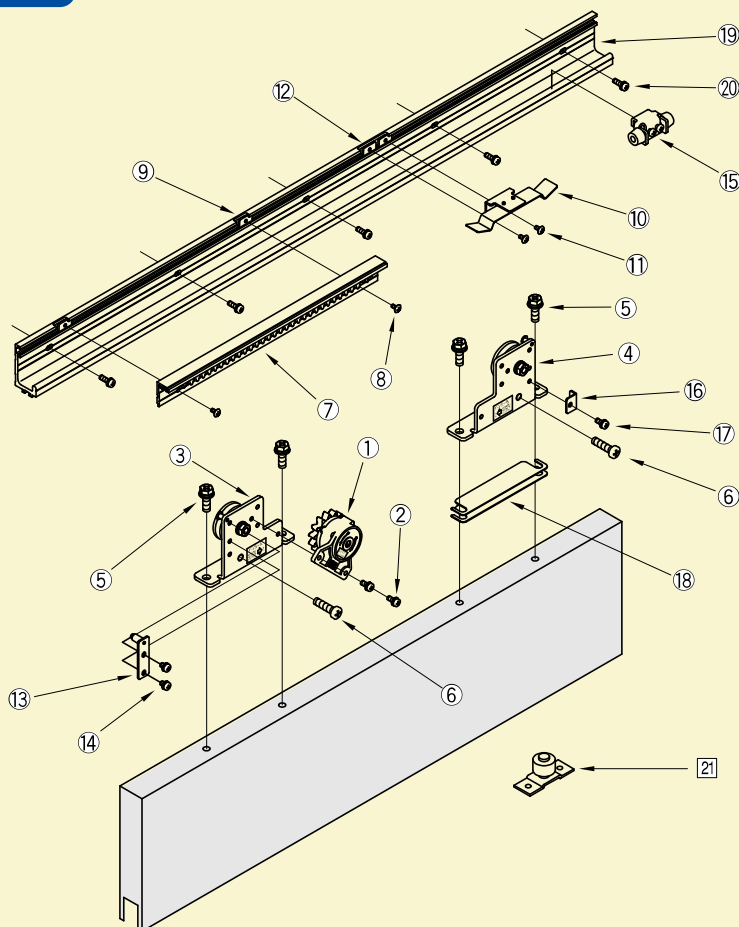
- A standardized set of parts required for inclined steel lightweight fitting types.
(The product comes standard with stop device, and other equipment.)
- An endless fluid friction resistance system ensures a long life.
- The product can be converted to the right- and left-handed opening types by simple operation.
- It is easy to install with a screwdriver.

Specifications

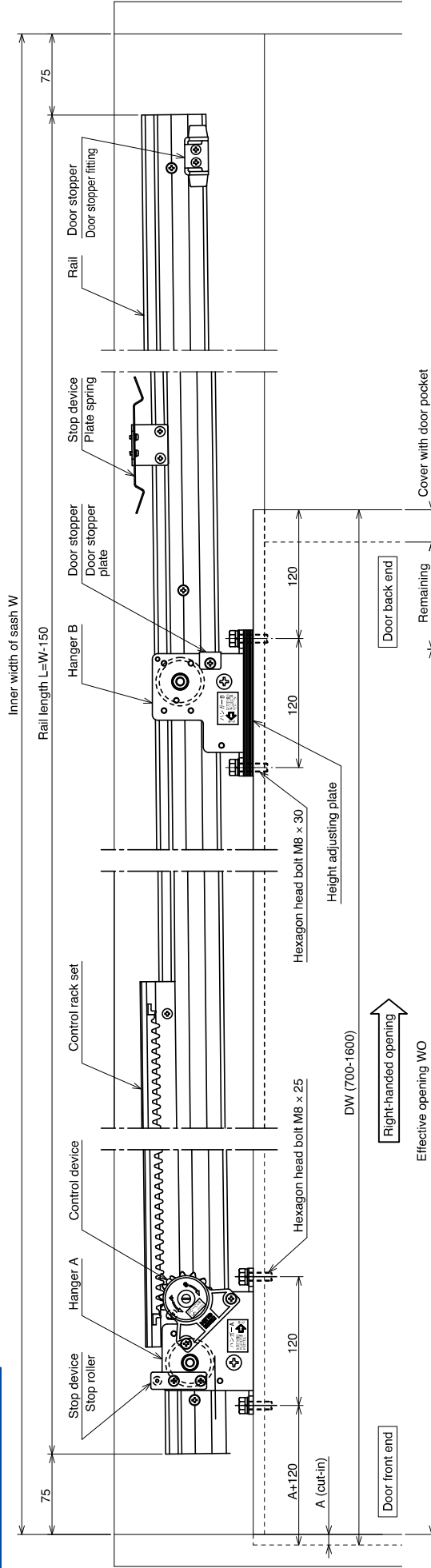
Model		DSC-C03-22	DSC-C03-31	DSC-C08-22	DSC-C08-31
Applicable doors	Weight [kg]	10-30		30-80	
	Width [mm]	700-1200	1200-1600	700-1200	1200-1600
Max. stroke [mm]		1500			
Closing drive system		Rail inclination (3.5/300)			
Controlling system		Fluid friction resistance type			
Controlling time		7-11 seconds (with a door-opening distance of 900mm)			
Initial opening force [N]		2.3-5.4		5.4-12.5	
Durability		More than 1 million open/close operations			
Rail length [m]		2.2	3.1	2.2	3.1



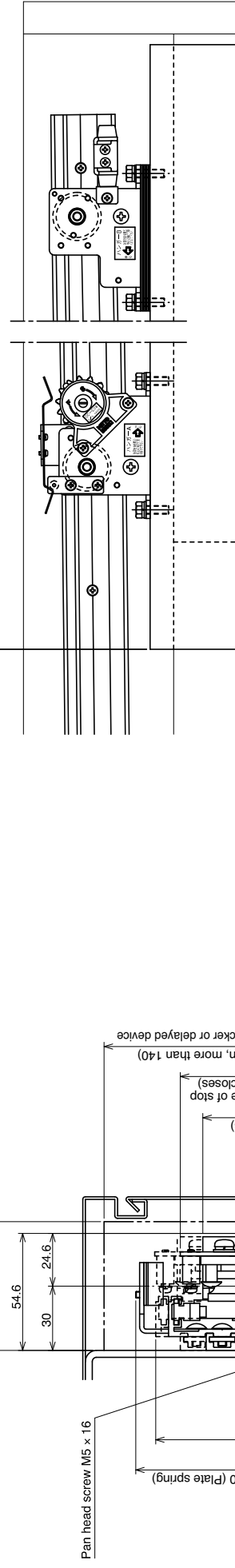
Part details



No.	Part	Q'ty	Remark
①	Control device	1	For control device
②	M5 × 12 pan head screw	2	
③	Hanger A	1	For hanger
④	Hanger B	1	
⑤	M8 × 25 hexagon head bolt	2	
	M8 × 30 hexagon head bolt	2	
⑥	M8 × 30 pan head screw	2	For door retention
⑦	Control rack set	1	For control rack set
⑧	M4 × 8 truss screw	2	
⑨	Plate nut	2	For stop device
⑩	Plate spring	1	
⑪	M4 × 8 truss screw	2	
⑫	Plate nut	2	
⑬	Stop roller	1	For door stopper
⑭	M5 × 8 pan head screw	2	
⑮	Door stopper fitting	1	
⑯	Door stopper plate	1	
⑰	M5 × 8 pan head screw	1	For rail
⑱	Height adjusting plate (t = 1.0, 0.5)	15+1	
⑲	Rail L = 2200 [L = 3100]	1	
⑳	M5 × 16 truss screw	8[11]	For rail
	φ5 × 30 truss tapping screw	8[11]	
㉑	Guide roller	1	Option



Fully open position



Number of height adjusting plates (reference)

Door width [mm]	No. of plates used
700-800 or less	6 pcs.
800-900 or less	7 pcs.
900-1000 or less	8 pcs.
1000-1100 or less	9 pcs.
1100-1200 or less	10 pcs.
1200-1300 or less	12 pcs.
1300-1400 or less	13 pcs.
1400-1500 or less	14 pcs.
1500-1600 or less	15 pcs.

1. These diagrams represent a right-handed opening type. The left-handed opening type is a mirror image of these diagrams.
2. Door orientation is right-handed if the door is opened rightwards as viewed from the inspection panel, and left-handed if the door is opened leftwards.

For steel lightweight fittings, inclined,
with door weights of 80~120kg

DSC-C012 series

**Reliable, Cost Effective, Sliding Doors
Closers – Simple to Use & Install**



Features

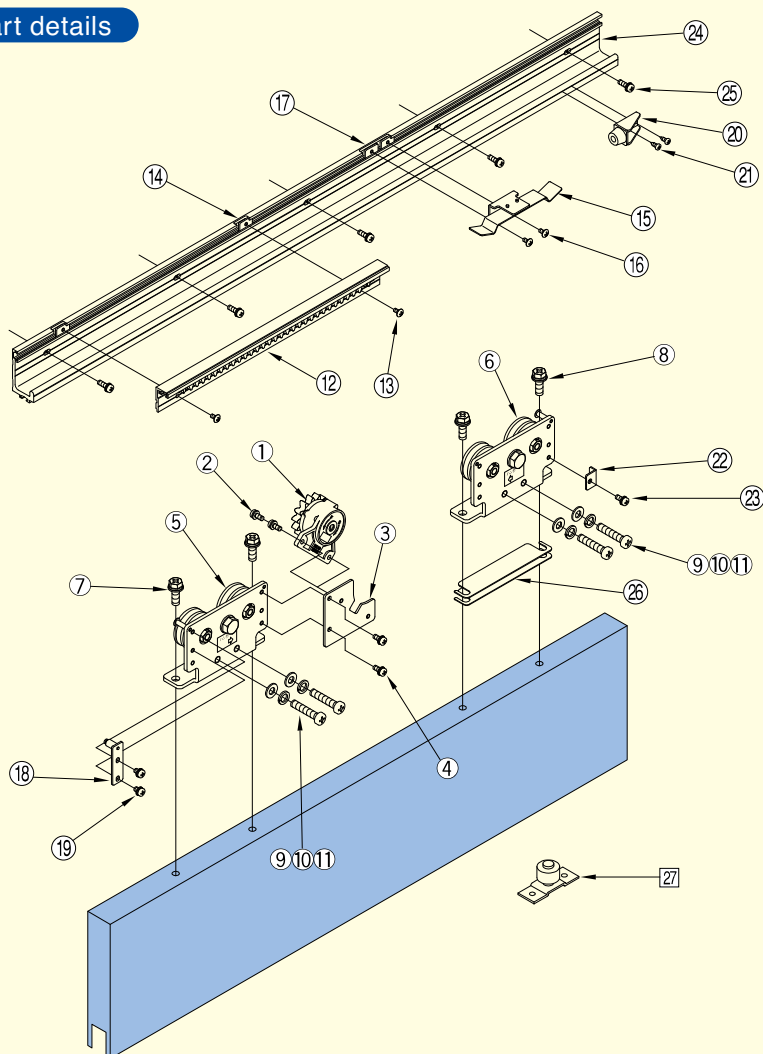
- A standardized set of parts required for inclined steel lightweight fitting types. (The product comes standard with stop device, and other equipment.)
- An endless fluid friction resistance system ensures a long life.
- The product can be converted to the right- and left-handed opening types by simple operation.
- It is easy to install with a screwdriver.

Specifications

Model		Inclined type	
		DSC-C012-22	DSC-C012-31
Applicable doors	Weight [kg]	80~120	
	Width [mm]	700~1200	1200~1600
Max. stroke [mm]		1500	
Closing drive system		Rail inclination(3.5/300)	
Controlling system		Fluid friction resistance type	
Controlling time		7~11seconds (with a door-opening distance of 900mm)	
Initial opening force [N]		12.5~17.7	
Durability		More than 1 million open/close operations	
Rail length [m]		2.2	3.1

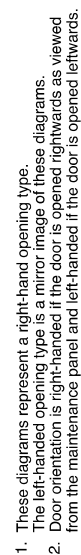


Part details



No.	Part	Q'ty	Remark
①	Control device	1	For control device
②	M5×12 pan head screw	2	
③	Control device bracket	1	
④	M5×12 pan head screw	2	
⑤	HangerA	1	For hanger
⑥	HangerB	1	
⑦	M8×25 hexagon head bolt	2	
⑧	M8×30 hexagon head bolt	2	For door retention
⑨	M8×40 pan head screw	4	
⑩	Spring washer M8	4	
⑪	Plean washer M8	4	For control rack set
⑫	Control rack set	1	
⑬	M4×8 truss screw	2	
⑭	Plate nut	2	For stop device
⑮	Plate spring	1	
⑯	M4×8 truss screw	2	
⑰	Plate nut	2	
⑱	Stop roller	1	For door stopper
⑲	M5×8 pan head screw	2	
⑳	Door stopper fitting	1	
㉑	φ4×10 pan head screw	2	For Rail
㉒	Door stopper plate	1	
㉓	M5×8 pan head screw	1	
㉔	Rail L=2200 [L=3100]	1	For Rail
㉕	M5×16 truss screw	8[11]	
㉖	φ5×30 truss tapping screw	8[11]	
㉗	Height adjusting plate (t=1.0,0.5)	15+1	Option
㉘	Guide roller	1	

DSC-C012 series inclined



For steel lightweight fittings, horizontal,
with door weights of 10-30kg, 30-60kg and 60-80kg

NSC-C23·36·48 series

Reliable, Cost Effective, Sliding Doors Closers – Simple to Use & Install

Features

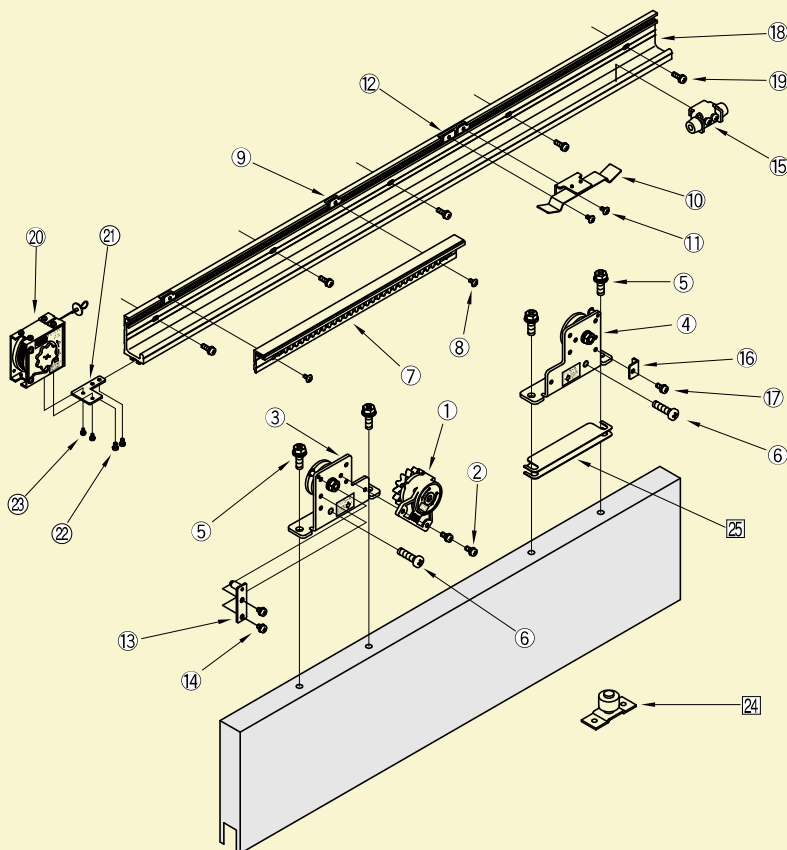
- A standardized set of parts required for horizontal steel lightweight fitting types.
(The product comes standard with a stop device, and other equipment.)
- An endless fluid friction resistance system ensures a long life.
- The product can be converted to the right- and left-handed opening types by simple operation.
- It is easy to install with a screwdriver.

Specifications

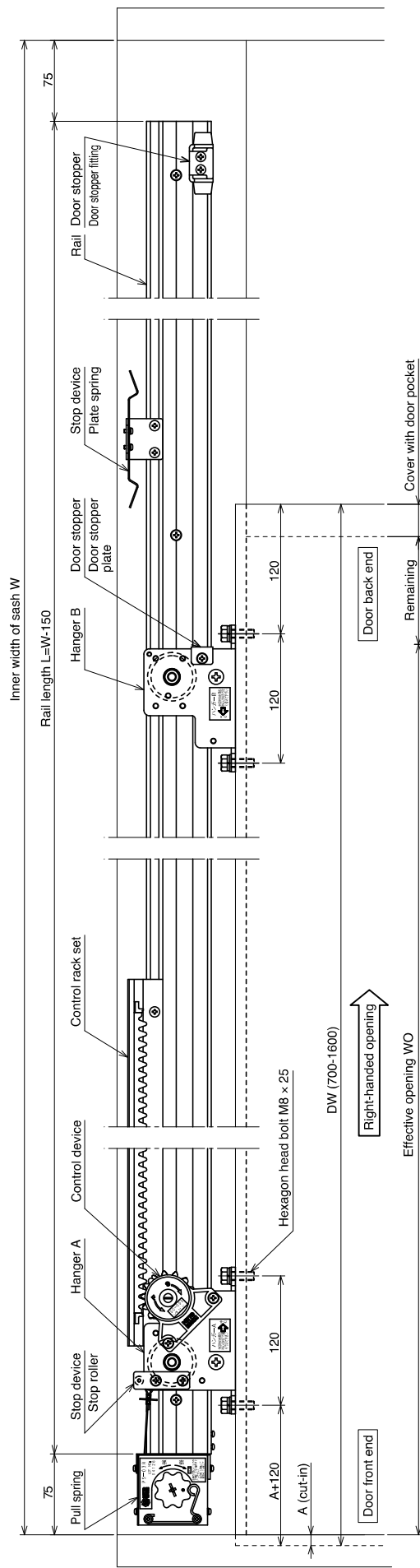
Model		NSC-C23-22	NSC-C23-31	NSC-C36-22	NSC-C36-31	NSC-C48-22	NSC-C48-31
Applicable doors	Weight [kg]	10-30		30-60		60-80	
	Width [mm]	700-1200	1200-1600	700-1200	1200-1600	700-1200	1200-1600
Max. stroke [mm]		1500					
Closing drive system		Spiral spring type					
Controlling system		Fluid friction resistance type					
Controlling time		7-11 seconds (with a door-opening distance of 900mm)					
Initial opening force [N]		3.5-4.6		4.7-6.9		7.0-8.0	
Durability		More than 1 million open/close operations					
Pull spring		PS-02		PS-03		PS-04	
Rail length [m]		2.2	3.1	2.2	3.1	2.2	3.1



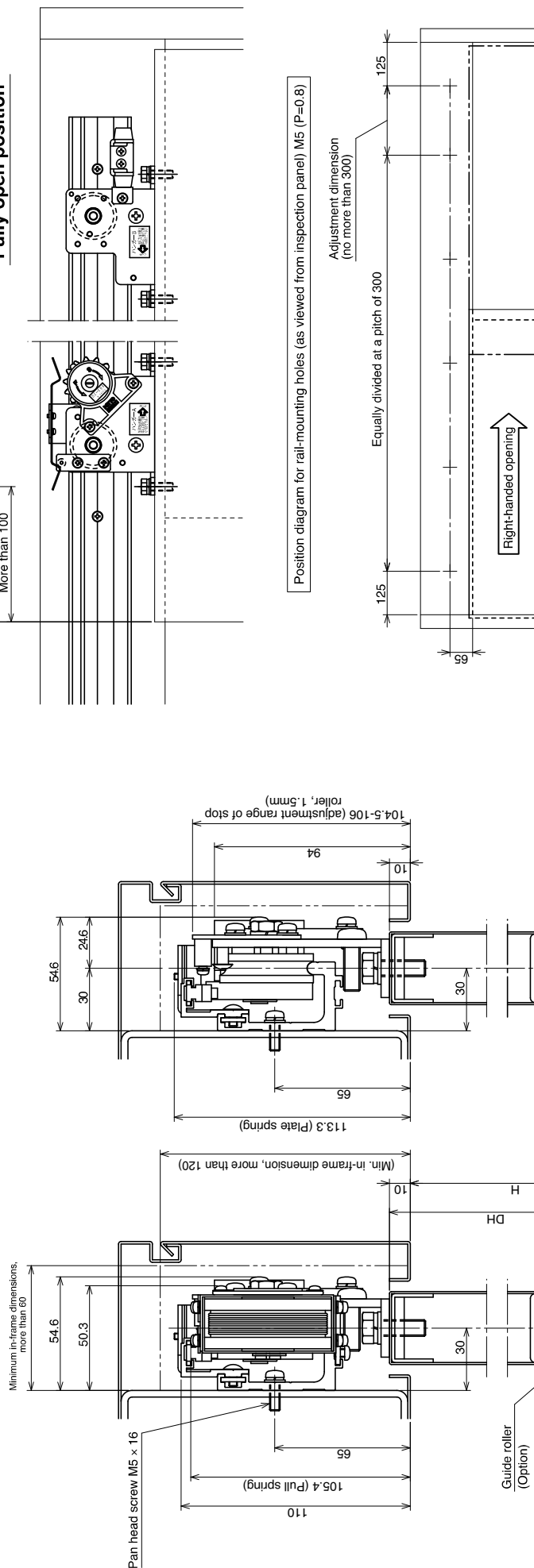
Part details



No.	Part	Q'ty	Remark
①	Control device	1	For control device
②	M5 × 12 pan head screw	2	
③	Hanger A	1	
④	Hanger B	1	For hanger
⑤	M8 × 25 hexagon head bolt	4	
⑥	M8 × 30 pan head screw	2	For door retention
⑦	Control rack set	1	
⑧	M4 × 8 truss screw	2	For control rack set
⑨	Plate nut	2	
⑩	Plate spring	1	
⑪	M4 × 8 truss screw	2	
⑫	Plate nut	2	For stop device
⑬	Stop roller	1	
⑭	M5 × 8 pan head screw	2	
⑮	Door stopper fitting	1	
⑯	Door stopper plate	1	For door stopper
⑰	M5 × 8 pan head screw	1	
⑱	Rail L = 2200 [L = 3100]	1	
⑲	M5 × 16 truss screw	8[11]	For rail
⑲	φ5 × 30 truss tapping screw	8[11]	
⑳	Pull spring	1	
㉑	Pull spring fitting	1	
㉒	M4 × 5 truss screw	2	For pull spring
㉓	M3 × 8 truss screw	2	
㉔	Guide roller	1	Option
㉕	Height adjusting plate (t=1.0, 0.5)	—	Option



Fully open position

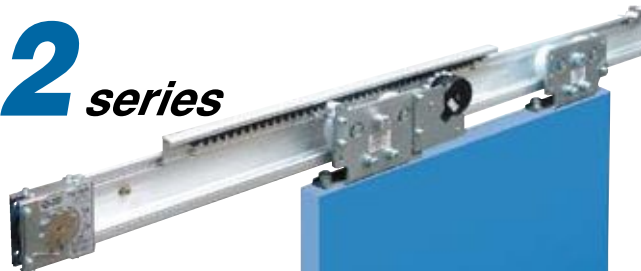


1. These diagrams represent a right-handed opening type.
 2. The left-handed opening type is a mirror image of these diagrams.
- Door orientation is right-handed if the door is opened rightwards as viewed from the inspection panel, and left-handed if the door is opened leftwards.

For steel lightweight fittings, horizontal,
with door weights of 80~120kg

NSC-C812 series

**Reliable, Cost Effective, Sliding Doors
Closers – Simple to Use & Install**



Features

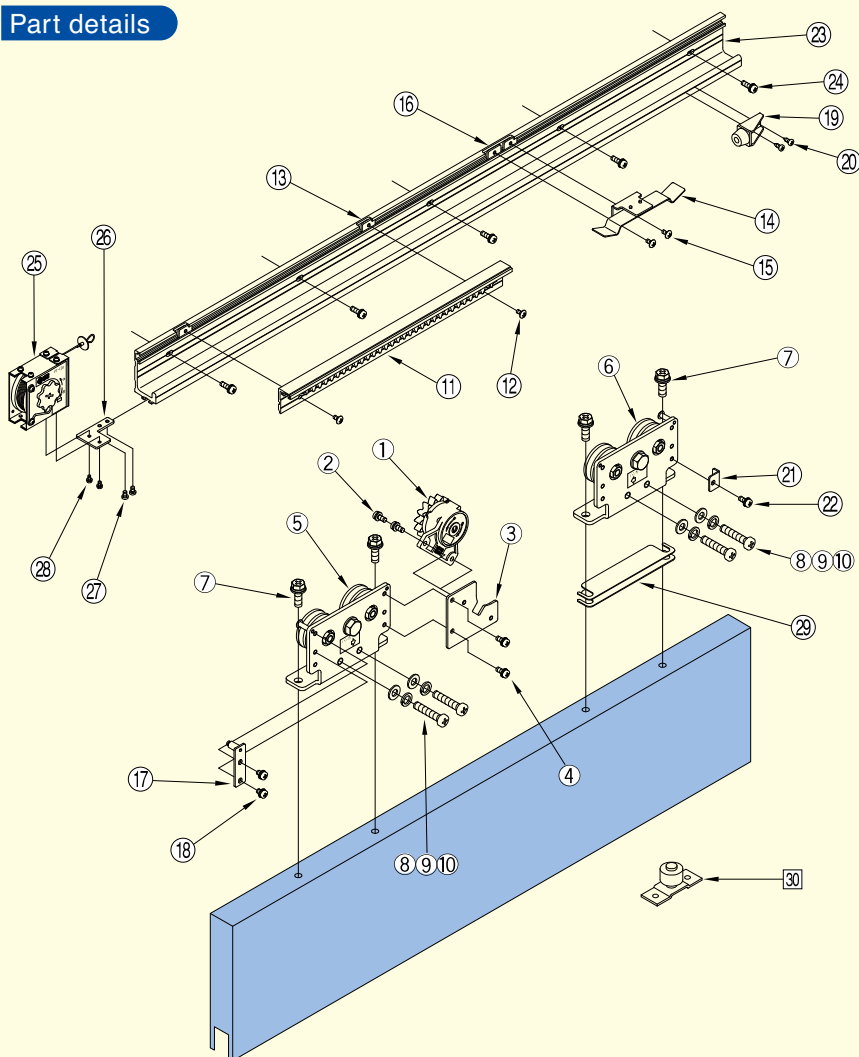
- A standardized set of parts required for horizontal steel lightweight fitting types. (The product comes standard with a stop device, and other equipment.)
- An endless fluid friction resistance system ensures a long life.
- The product can be converted to the right- and left-handed opening types by simple operation.
- It is easy to install with a single screwdriver.

Specifications

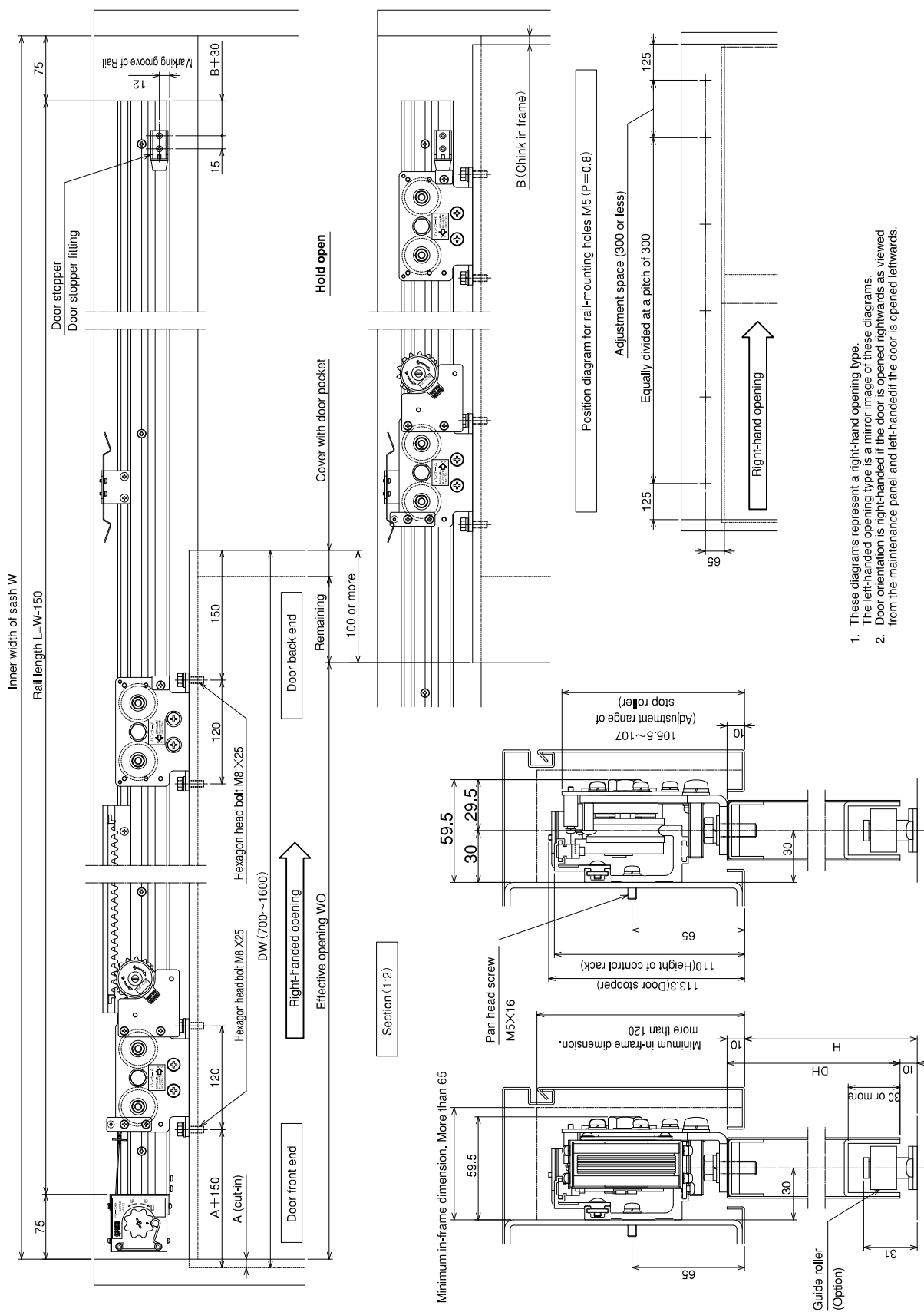
Model		Horizontal type	
		NSC-C812-22	NSC-C812-31
Applicable doors	Weight (kg)	80~120	
	Width (mm)	700~1200	1200~1600
Max. stroke (mm)		1500	
Closing drive system		Spiral spring type	
Controlling system		Fluid friction resistance type	
Controlling time		7~11seconds (with a door-opening distance of 900mm)	
Initial opening force (N)		13.8~16.5	
Durability		More than 1 million open/close operations	
Pull spring		PS-08	
Rail length (m)		2.2	3.1



Part details



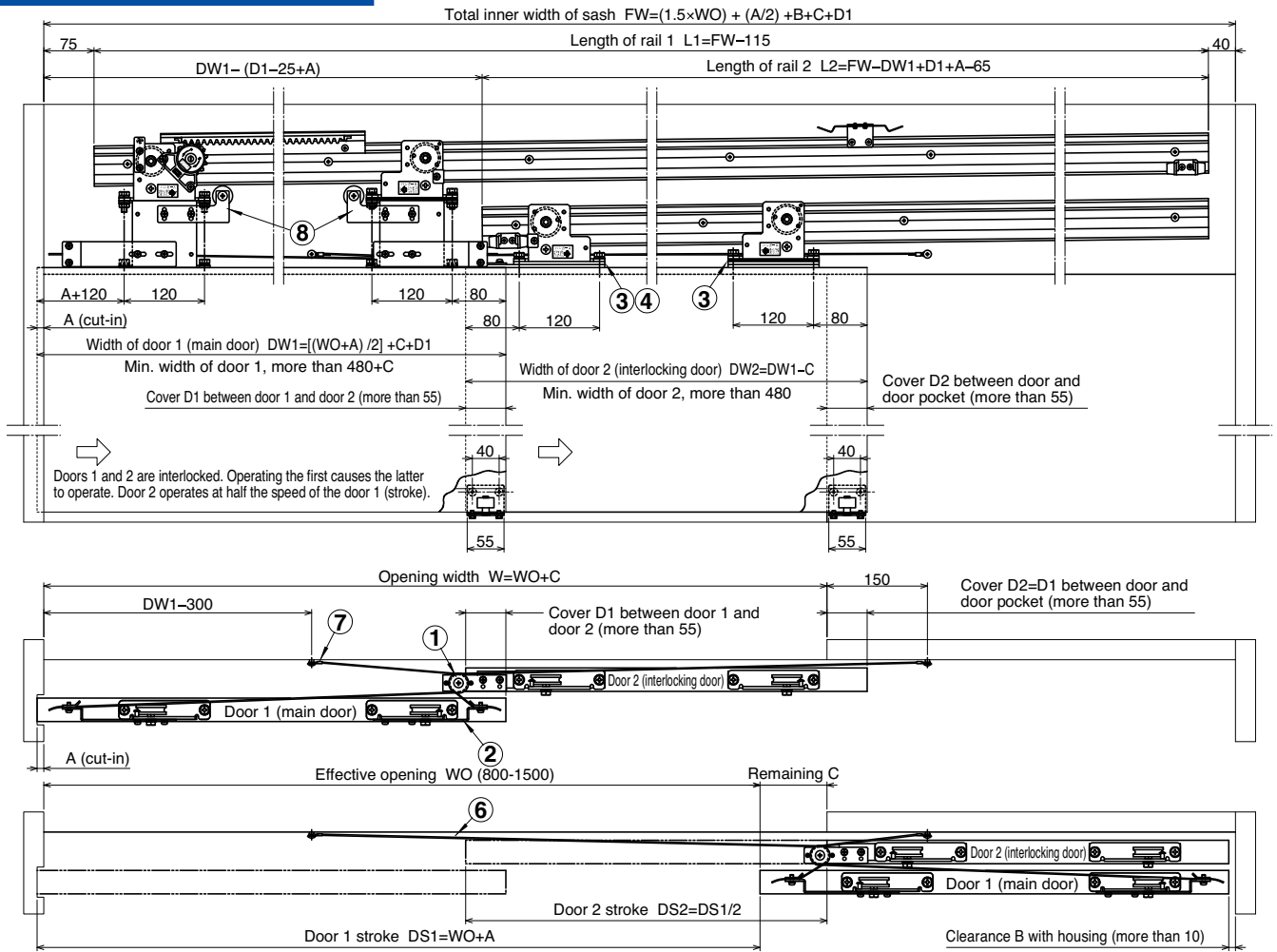
No.	Part	Q'ty	Remark
①	Control device	1	For control device
②	M5×12 pan head screw	2	
③	Control device bracket	1	
④	M5×12 pan head screw	2	For hanger
⑤	HangerA	1	
⑥	HangerB	1	
⑦	M8×25 hexagon head bolt	4	For door retention
⑧	M8×40 pan head screw	4	
⑨	Spring washer M8	4	
⑩	Plean washer M8	4	For control rack set
⑪	Control rack set	1	
⑫	M4×8 truss screw	2	
⑬	Plate nut	2	For stop device
⑭	Plate spring	1	
⑮	M4×8 truss screw	2	
⑯	Plate nut	2	For door stopper
⑰	Stop roller	1	
⑱	M5×8 pan head screw	2	
⑲	Door stopper fitting	1	For door stopper
⑳	φ4×10 pan head tapping screw	2	
㉑	Door stopper bearing plate	1	
㉒	M5×8 pan head screw	1	For rail
㉓	Rail L=2200 [L=3100]	1	
㉔	M5×16 truss screw	8[11]	
㉕	φ5×30 truss tapping screw	8[11]	For pull spring
㉖	Pull spring	1	
㉗	Pull spring fitting	1	
㉘	M4×5 pan head screw	2	For pull spring
㉙	M3×8 pan head screw	2	
㉚	Height adjusting plate (t=1.0)	4	
㉛	Guide roller	1	Option



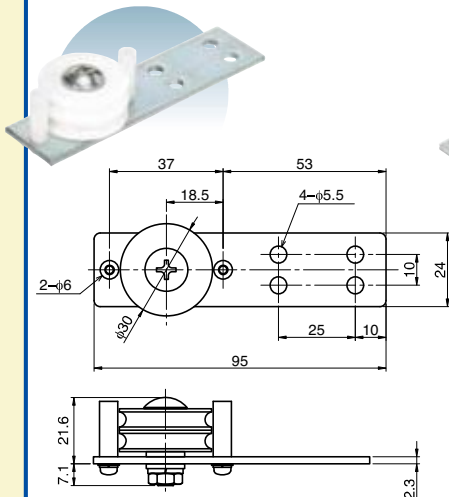
1. These diagrams represent a right-hand opening type.
2. The left-handed opening type is a mirror image of these diagrams.

Option Single action Double sliding system, SC-2S

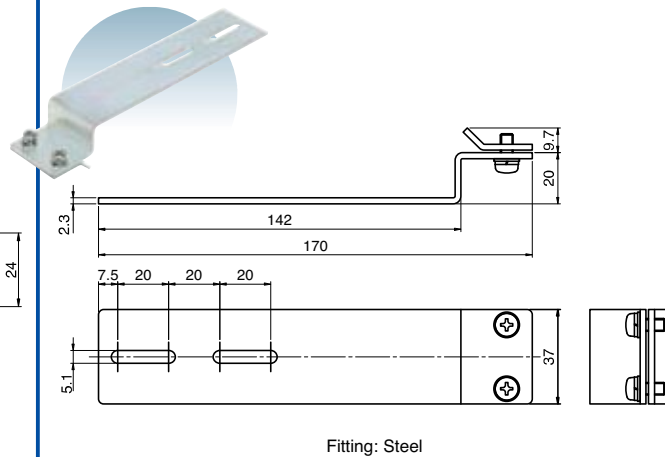
Installation diagrams



1 Pulley fitting



2 Wire fitting



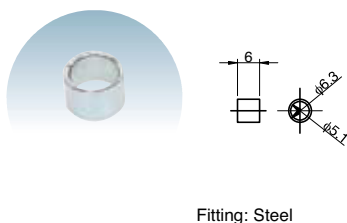
3 Liner S



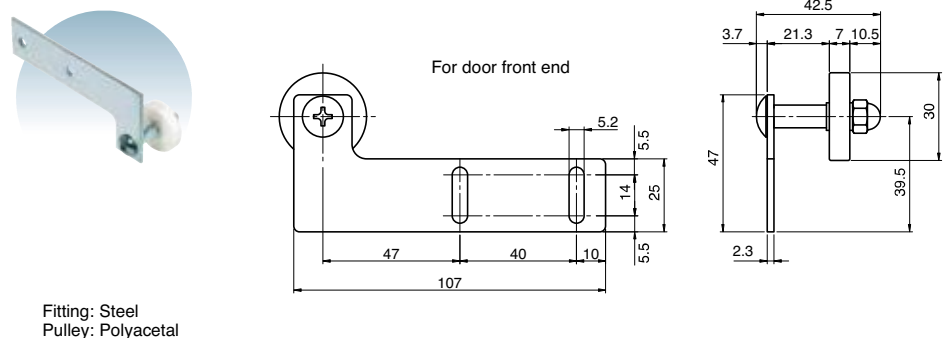
4 Liner L



7 Wire fastener on frame



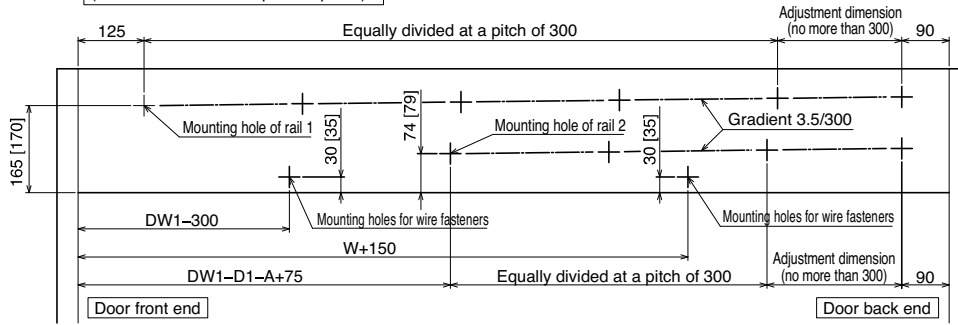
8 Rebound-preventive fitting



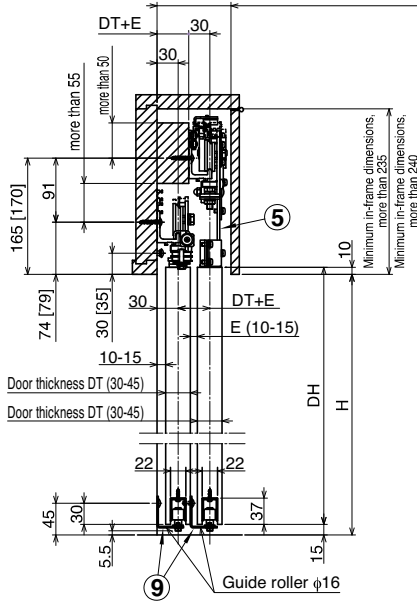
Single action Double sliding system, SC-2S

Position diagram of holes on the frame
(as viewed from the inspection panel)

*When handling a steel frame, tap M5 holes (P = 0.8).



Minimum in-frame dimensions,
DT+E more than 60



Formulae for calculating main dimensions

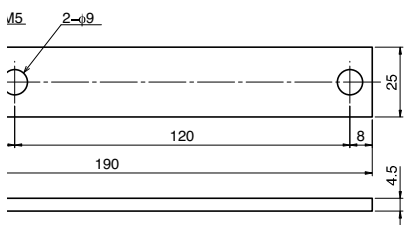
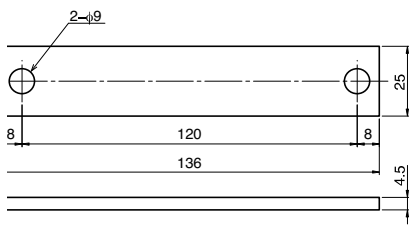
Item	Code	Formula
Effective opening	WO	Specify (800-1,500)
Cut-in of door front end	A	Specify
Clearance between housing and door when door is open	B	Specify (more than 10)
Remaining	C	Specify
Cover between doors 1 and 2	D1	Specify (more than 55)
Cover between door 2 and door pocket	D2	D2=D1 (more than 55)
Width of door 1	DW1	$\frac{WO+A}{2} + C + D1$
Width of door 2	DW2	DW1-C (more than 480)
Opening width	W	WO+C
Inner width of sash	FW	$(1.5 \times WO) + \frac{A}{2} + B + C + D1$
Length of rail 1	L1	FW-115
Length of rail 2	L2	FW-DW1+D1+A-65

Constituents of single action Double sliding system

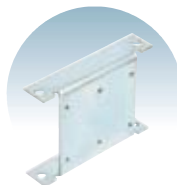
Item	Part	Qty of 1 set	Remark
①	Pulley fitting	1	
②	Wire fastener	2	
③	Liner S	3	
④	Liner L	1	
⑤	Hanger base	2	
⑥	Wire rope	2	
⑦	Wire fastener on frame	2	
⑧	Rebound-preventive fitting	2	1 pc. each for door front end and for door back end
⑨	Guide roller AJ	2	4 types, D = 16, 25, 30, 35
⑩	Hexagon head bolt (M8×25)	4	For installing hanger bracket and hanger
⑪	Hexagon head nut (M8)	4	For installing hanger bracket and hanger
⑫	Flat washer (for M8)	4	For installing hanger bracket and hanger
⑬	Pan head screw (M5×12)	8	Wire fitting, for installing rebound-preventive fitting
⑭	Pan head screw (M5×8)	2	For installing pulley fitting
⑮	Truss screw (M5×12)	2	For installing wire fitting on frame
⑯	Truss screw (M5×12 SUS)	2	For installing guide roller

Remarks

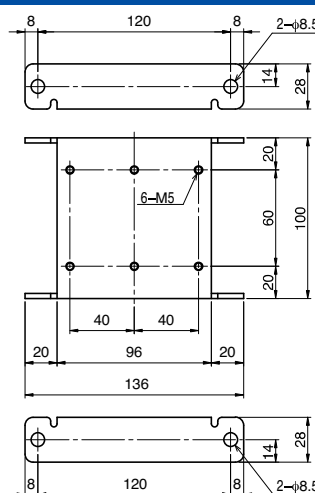
- These diagrams represent a right-handed opening type. The left-handed opening type is a mirror image of these diagrams.
- The dimensions in [] are used when the wooden door plate is used (DSC-CW08 and NSC-CW36/48).
- These diagrams show how an inclined DSC is typically installed. The inclined and horizontal types incorporate identical parts.
- This system is required SC-2S, Standard set, Hanger(A,B), Rail and Door stopper.



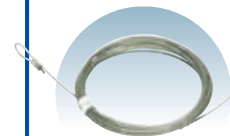
5 Hanger base



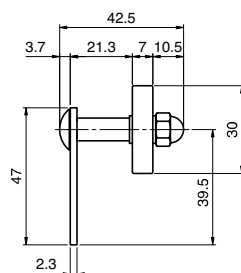
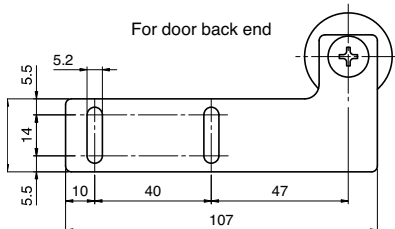
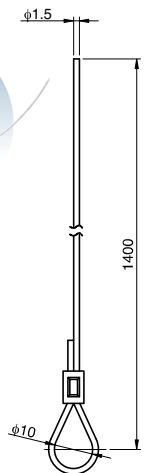
Base: Steel



6 Wire rope



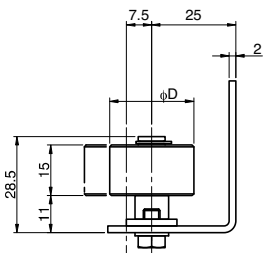
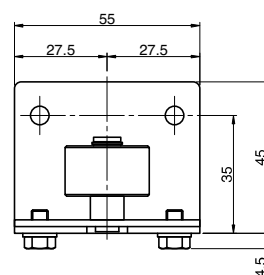
Wire: Stainless steel



9 Guide roller AJ



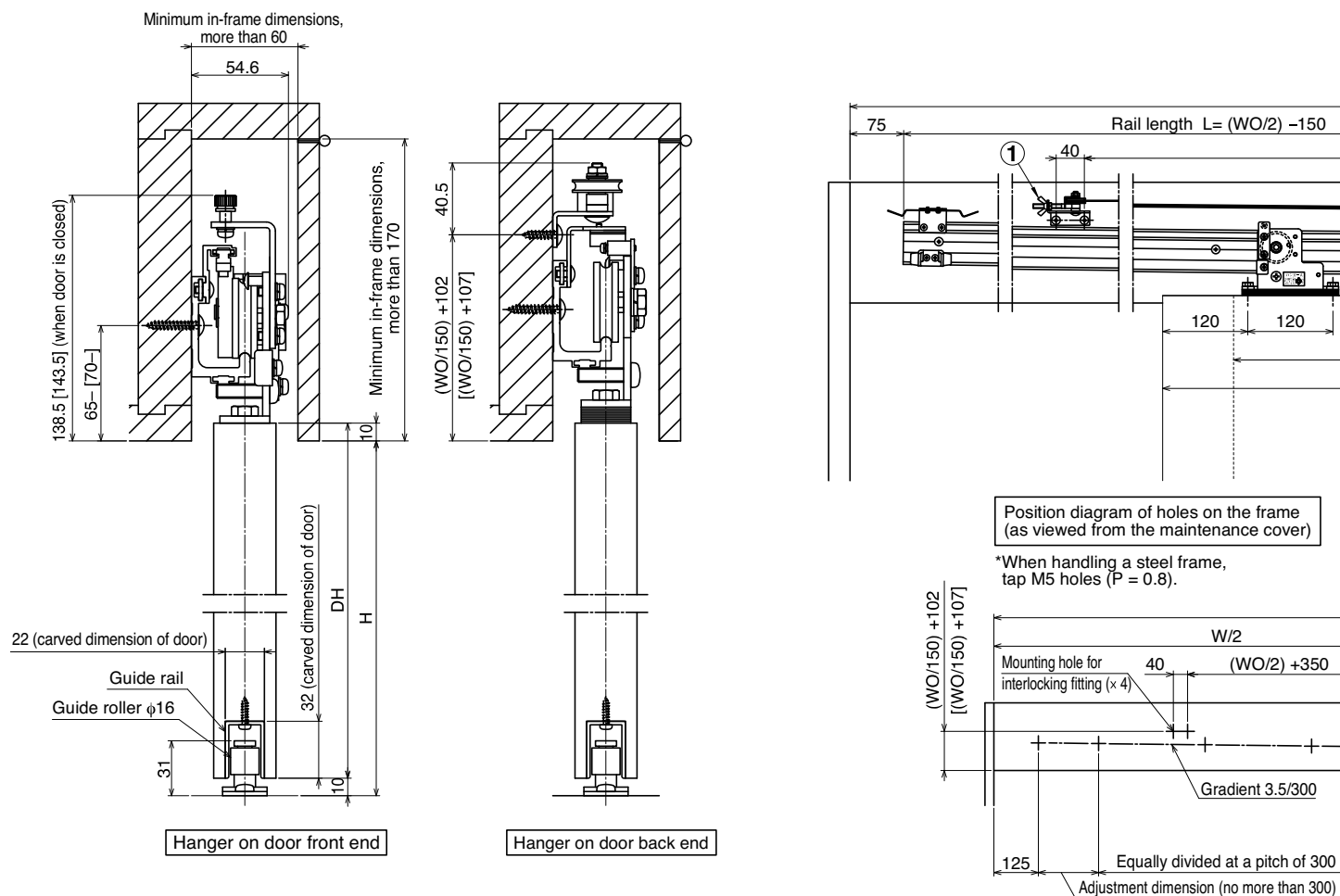
Fitting: Steel
Roller: Polyacetal



*4 types, $\phi D = 16, 25, 30, 35$

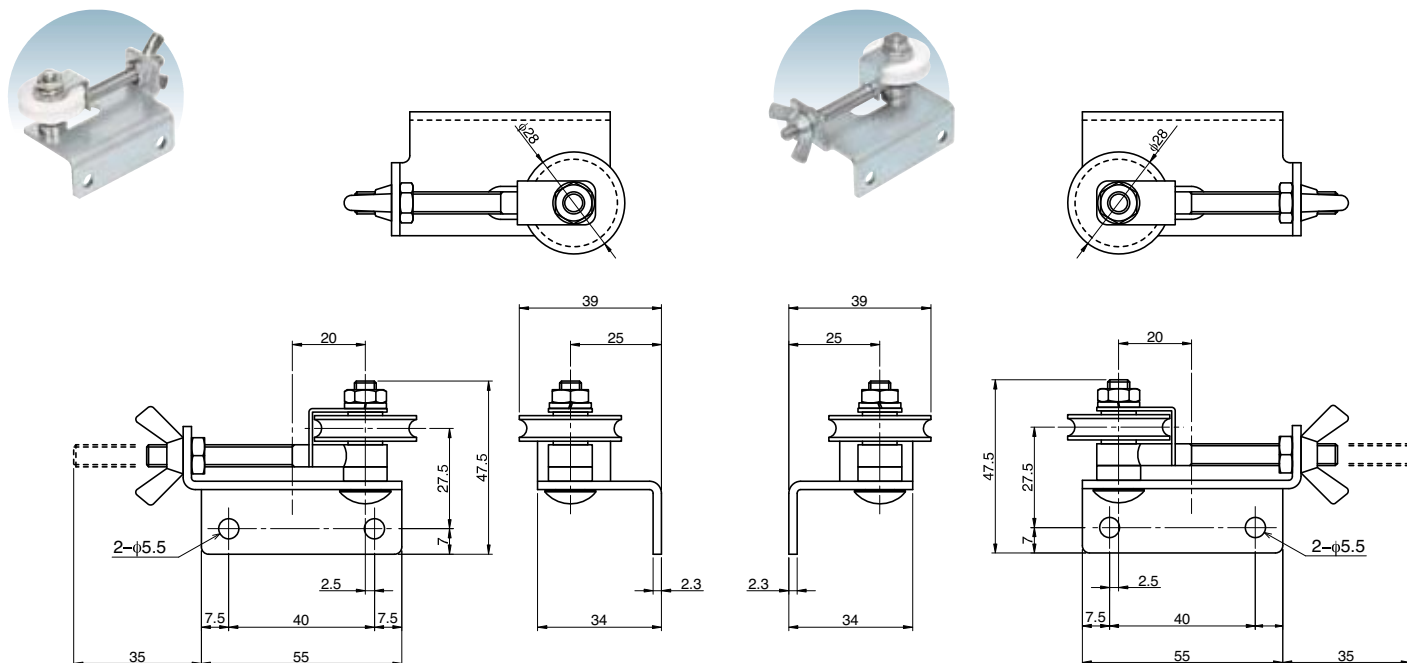
Option Bi-Parting system, SC-W

Installation diagrams



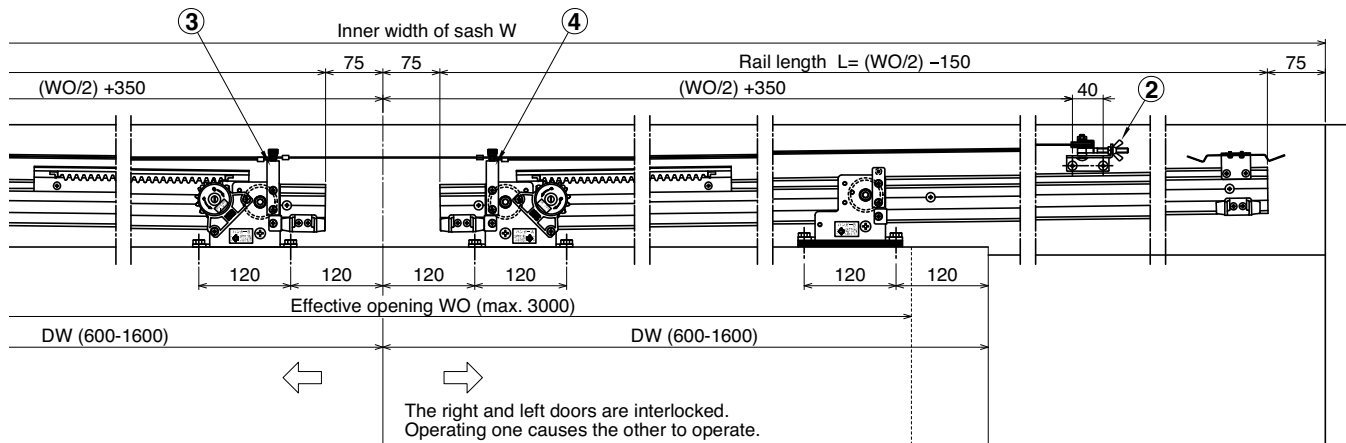
1 Adjustment fitting L

2 Adjustment fitting R



Fitting: Steel
Roller: Polyacetal

Bi-Parting system, SC-W

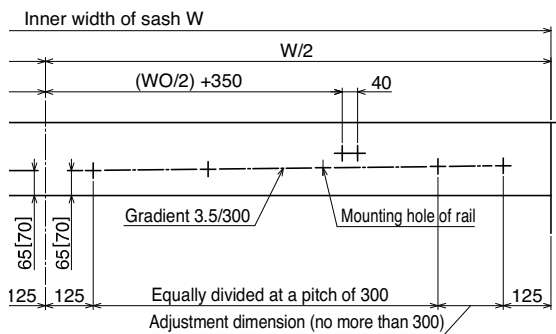


Constituents of Bi-Parting system

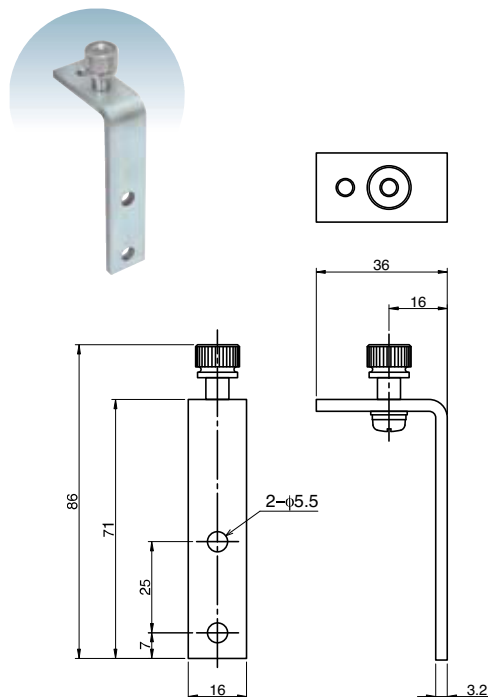
Item	Part	Q'ty of 1 set	Remark
1	Adjustment fitting L	1	
2	Adjustment fitting R	1	
3	Angle L	1	
4	Angle R	1	
5	Wire rope	2	
6	Pan head screw (M5×12)	4	For installing adjustment fitting
7	Aluminum sleeve	2	Wire rope for crimping

Remarks

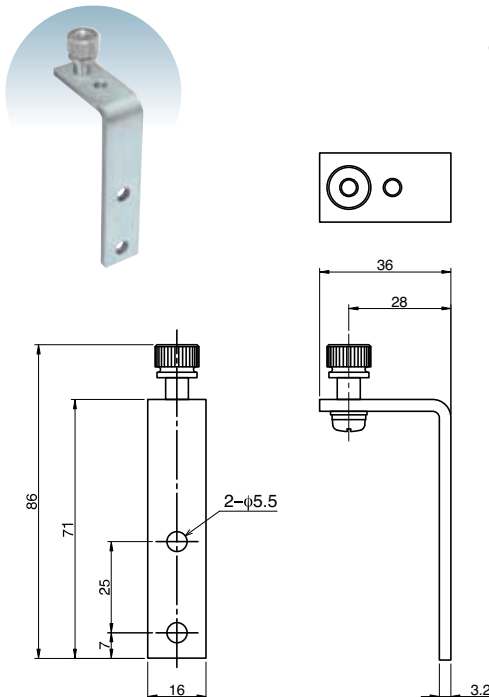
- These diagrams represent a right-handed opening type. The left-handed opening type is a mirror image of these diagrams.
- The dimensions in [] are used when the wooden door plate is used (DSC-CW08 and NSC-CW36/48).
- These diagrams show how an inclined DSC is typically installed. The inclined and horizontal types incorporate identical parts.
- This system is required SC-W, two set of standard model and two set of door stopper.



Angle L

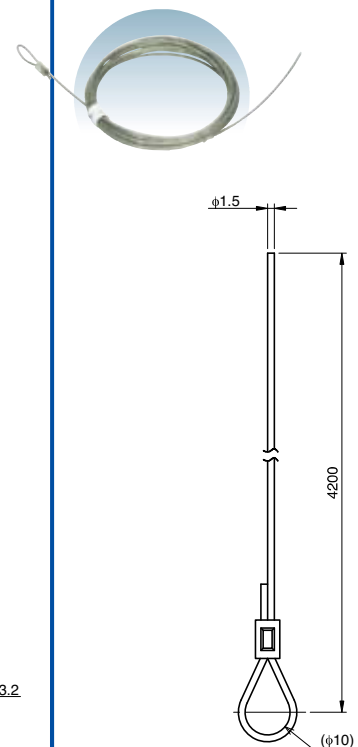


Angle R



Angle: Steel

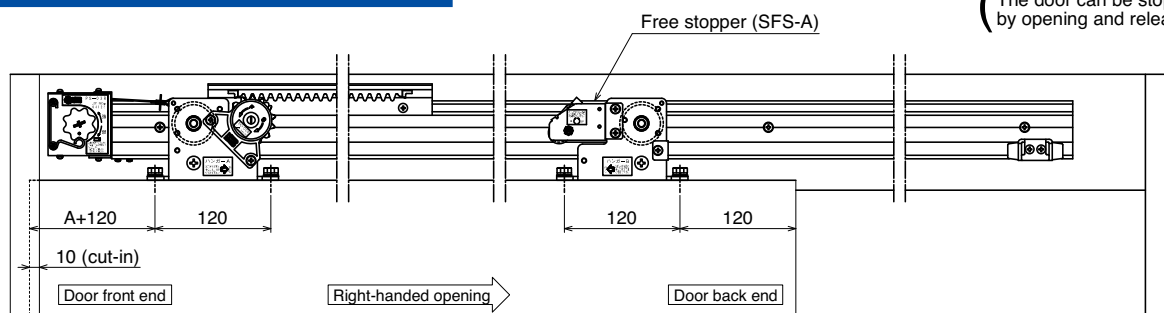
Wire rope



Wire: Stainless steel

Option Free stopper, Back checker, Delayed device, Maintenance cover

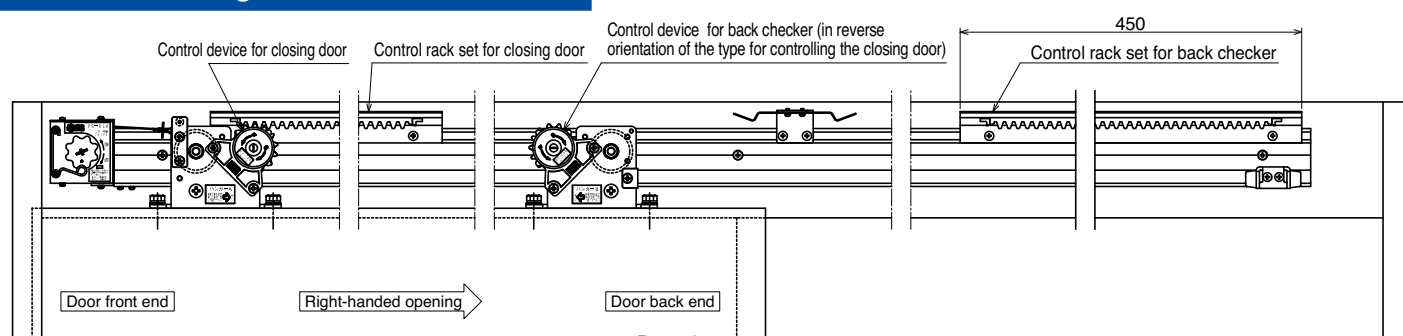
Installation diagrams of free stopper



Remarks

1. These diagrams represent a right-handed opening type. The left-handed opening type is a mirror image of these diagrams.
2. This diagram shows how a model of the horizontal NSC-C series is typically installed.
3. Models of the inclined DSC-C series are installed in the same way as in this diagram.

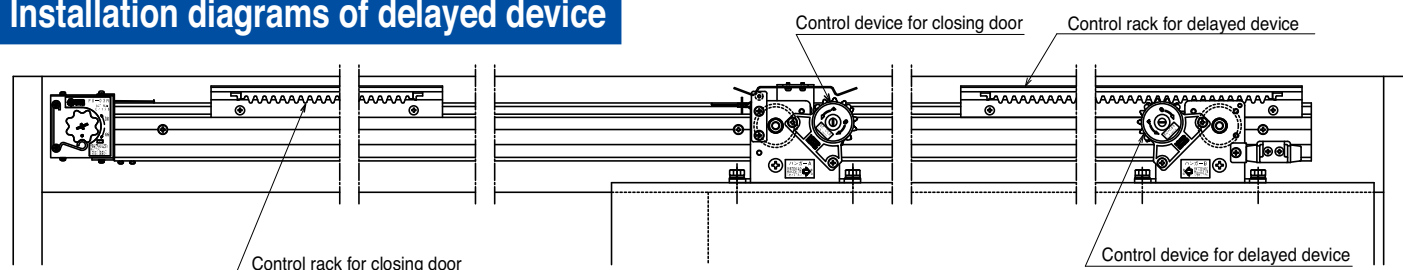
Installation diagrams of back checker



Remarks

1. These diagrams represent a right-handed opening type. The left-handed opening type is a mirror image of these diagrams.
2. This diagram shows how a model of the horizontal NSC-C series is typically installed.
3. Models of the inclined DSC-C series are installed in the same way as in this diagram.

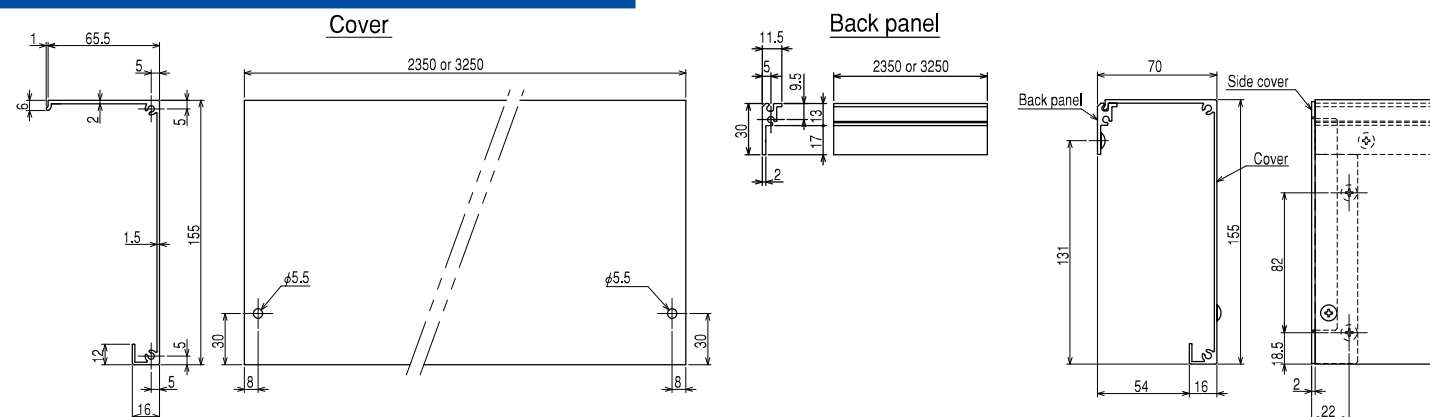
Installation diagrams of delayed device



Remarks

1. These diagrams represent a right-handed opening type. The left-handed opening type is a mirror image of these diagrams.
2. This diagram shows how a model of the horizontal NSC-C series is typically installed.
3. Models of the inclined DSC-C series are installed in a similar way.
4. A back checker or a delayed device cannot be combined with a free stopper.

External diagrams of maintenance cover and side cover



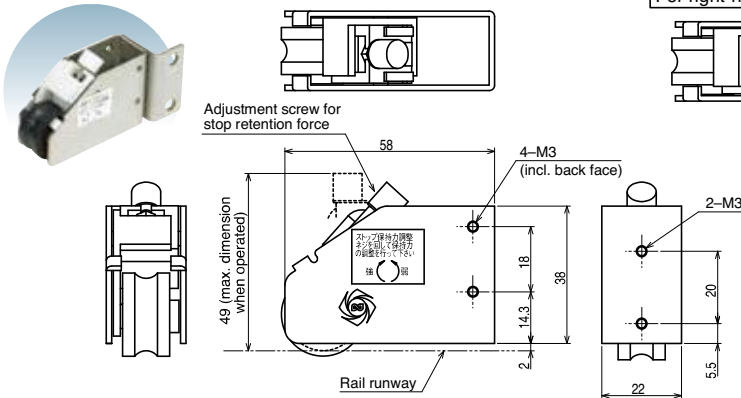
Free stopper (installing the hanger on the door back end)

Free stopper

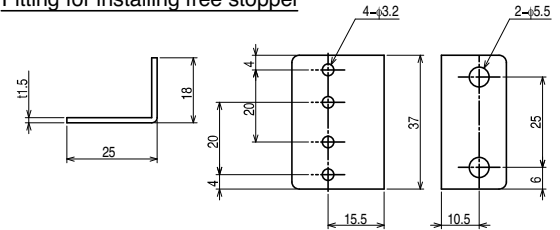
Diagram of fittings installed

For right-handed opening type

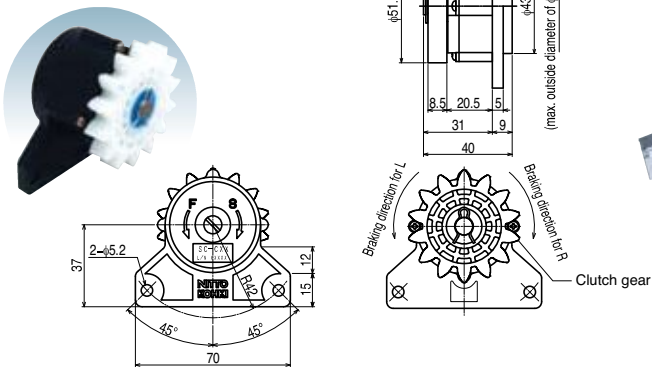
For left-handed opening type



Fitting for installing free stopper

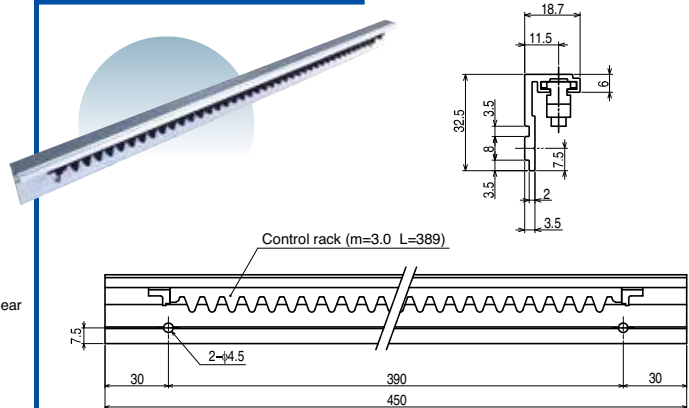


Control device for back check (installing the hanger on the door back end)

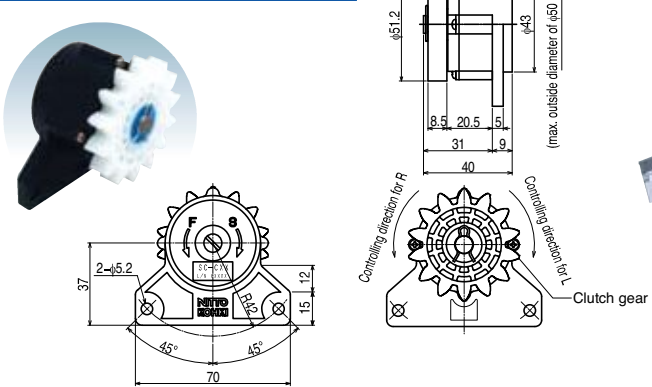


Reverse orientation of the control device for the closing door.

Control rack set for back check (installing the door back end)

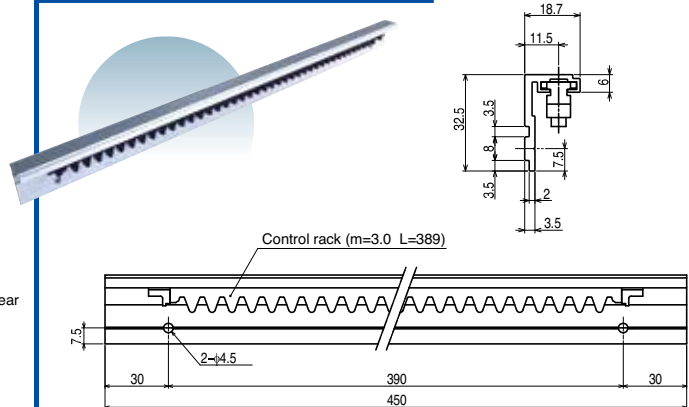


Control device for the delayed device (installing the hanger on the door back end)



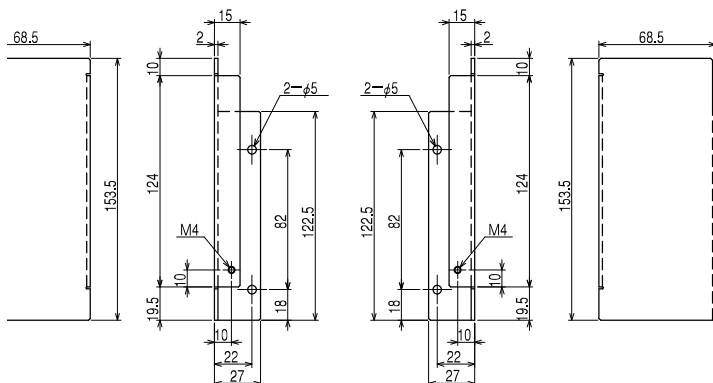
The same orientation as the control device for the closing door.

Control rack set for the delayed device (installing the door back end)



Side cover L

Side cover R



Remarks

- It is made of aluminum.
- The maintenance cover, back panel, and side cover (one on the right and another on the left) come with mounting screws.
- The apparent dimension is 155mm.

For lightweight fittings in bathrooms, horizontal type for
bathrooms with door weights of 10-30kg, 30-60kg and 60-80kg

NSC-CB23•36•48 series

The use of stainless steel and a unique sealing technology has created corrosion-resistant, long-life products.

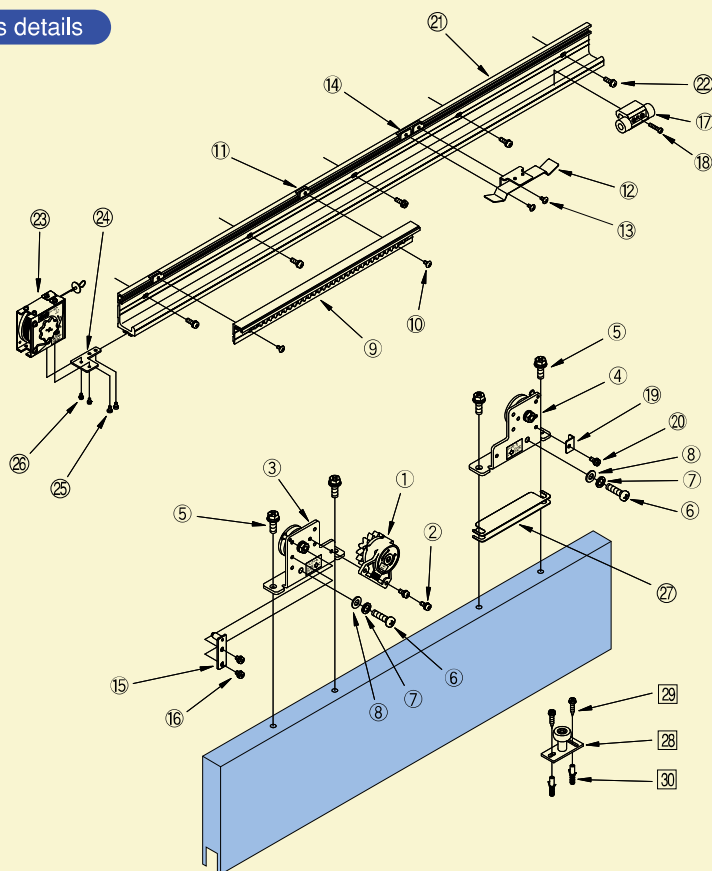
Features

- These products can be used for long periods even in bathrooms and other hot corrosive environments. (They cannot be used in sauna rooms or other very hot environments.)
- The rotary part of the door roller is so designed as to be independent of dust or moisture, thus ensuring high corrosion-resistance and long stability.
- These products apply to doors weighing 10-80kg with openings not exceeding 1,500mm.
- The control device consists of a controlling-force centrifuge structure based on fluid friction resistance, thus ensuring high reliability.
- These products use a pull spring giving excellent performance and high durability (1 million operations) to close the door securely with a light force.

Specifications

Model		NSC-CB23-22/NSC-CB23-22-31			NSC-CB36-22/NSC-CB36-31			NSC-CB48-22/NSC-CB48-31		
Applicable doors	Weight [kg]	10-30			30-60			60-80		
	Width [mm]	700-1200	1200-1400	1400-1600	700-1200	1200-1400	1400-1600	700-1200	1200-1400	1400-1600
Max. stroke [mm]		1500								
Closing drive system		Spiral spring type								
Controlling system		Fluid friction resistance type								
Controlling time		8-15 seconds (with a door-opening distance of 900mm)								
Initial opening force [N]		3.5-4.6			4.7-6.9			7.0-8.0		
Durability		More than 1 million open/close operations								
Pull spring		PS-B02			PS-B03			PS-B04		
Rail length [m]		2.2	2.8	3.4	2.2	2.8	3.4	2.2	2.8	3.4

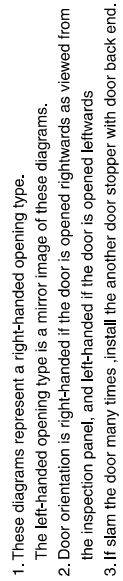
Parts details



Part	No.	Remark	Q'ty
Control device	①	SC-CB03/SC-CB08	1
	②	M5×12 pan head screw	2
Hanger	③	Hanger A	1
	④	Hanger B	1
	⑤	M8×25 hexagon head bolt	4
	⑥	M8×30 pan head screw	2
	⑦	Spring washer M8	2
	⑧	Plain washer M8	2
Control rack set	⑨	Control rack set	1
	⑩	M4×8 truss screw	2
	⑪	Plate nut	2
Stop device	⑫	Plate spring	1
	⑬	M4×8 truss screw	2
	⑭	Plate nut	2
	⑮	Stop roller	1
	⑯	M5×8 pan head screw	2
	⑰	Door stopper fitting	1
Door stopper	⑱	φ 4×20 pan head tapping screw	1
	⑲	Door stopper plate	1
	⑳	M5×8 pan head screw	1
Rail	㉑	Rail L=2200 [L=3100]	1
	㉒	M5×16 pan head screw	8 [11]
	㉓	5×30 truss tapping screw	8 [11]
Pull spring	㉔	Pull spring	1
	㉕	Pull spring fitting	1
	㉖	M4×5 pan head screw	2
	㉗	M3×8 pan head screw	2
Height adjusting plate	㉘	(T=1.0)	4
Guide roller (Option)	㉙	Guide roller	1
	㉚	5×25 hexagon tapping screw	2
	㉛	M5×12 hexagon head bolt	2
	㉜	Curl plug 6×30	2

NSC-CB type	Our standard product
NSC-CB type	Our standard product

Test method : CASS test (JIS H 8502)

48 hour \times 3 times(144 hours in total)

User-friendly technology

NITTO KOHKI AUTO HINGES

OTHER RELATED PRODUCTS

FLAG TYPE



- Armless closer making a boast of Nitto Kohki, being easily installed on an arch door, etc.
- Various models according to types and sizes of doors (wooden, aluminum, lightweight steel, steel doors) are available from us.

PC series



- Drip-proof design
- Adopts an actuator with unique temperature sensor, thus assuring constant closing speed all the year round.

700 series



- They come with special sealing and stainless steel.
- A much wider range of uses including bathrooms and seashores.

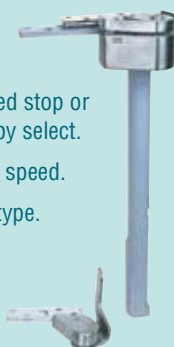
CENTER HANG TYPE

- Most suitable for fire protection, open smoke ventilation and normally-opened / closed doors and air supply doors.
- Concealed type (door built-in type.)



CONCEALED

- Can be selected stop or without stop by select.
- 2 way closing speed.
- Door built-in type.



CREATE

- Projecting type door closer Automatically closes a door with quiet in combined use of a capsule with built-in spring and hydraulic device and a special pivot hinge.
- Simple design Provided with arm-free construction, presenting simple design and beauty fit for any door.



⚠ Safety precautions

● To avoid personal injury and other accidents, thoroughly read the precautions set forth in the "Instruction Manual" or "Catalog" and properly complete the installation and adjustment procedures before use.

● Ensure that the door closing speed is properly adjusted at all times. If it is too high, personal injury may result.

Driving Inventive Technologies Too Open Up Tomorrows



Contact us
Kentokyo@nitto-kohki.co.jp
Product Info
<http://www.nitto-kohki.co.jp>

Head Office and Research Center
Nakaikagami 2-9-4, Ohta-ku, Tokyo
146-8555 Japan
Phone : 03(3755)1111 Fax : 03(3753)8791

Overseas Auto Hinge Sales Division
Yokoyama Bldg. 7F, Nishi-Nippori 2-40-3,
Arakawa-ku, Tokyo 116-0013 Japan
146-8555 Japan
Phone : 03(5850)5781 Fax : 03(3801)6001

★ Specifications and designs are subject to change at any time without notice.

DISTRIBUTED BY

★ The contents of this catalog are effective as of November 2007. For product improvement purposes, the specifications and designs are subject to change without prior notice.



● This document is made with recycled paper and printed with soy-based inks.

Printed in Japan 07KV02-①