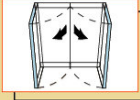


SWICO The Automatic Door Specialists

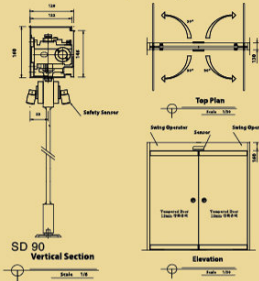
SWING AUTOMATIC DOOR With the solution of using Swing Door, users do not have to worry about a narrow installed space. When a person comes in, the door will automatically open inward and if the person comes out, it will open outward. When encounter obstacles, the door will automatically reverse. Especially, with two safety sensors which are installed right on the door, anything within the activated area will be safe. Sinil is proud to be the producer who develop 180 degree both direction Swing door the first time in the world.



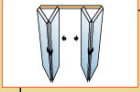
SD90

Specifications:

Item	SWING automatic door
Model	SD90
Controller	Micom processor
Motor	45 W Fuji Micro DC Brushless Motor
Power Supply	AC 180 ~ 220 V 50/60Hz
Door Weight	Max 100 kg
Door Width	600mm ~ 1000mm
Dimension	130 x 160 x 460 mm
Opening/Closing speed to 90°	2 - 5 /s (Adjustable)
Open method	90° - 180°



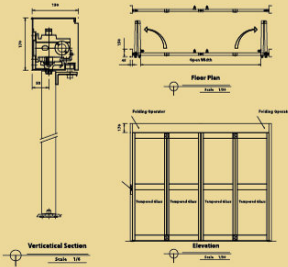
FOLDING AUTOMATIC DOOR Folding-type door requires smaller space for operation than swing-type. Even in a small space, it still fully opens. With flat-floor structure, there is no groove and guide-rail on the floor. It operates smoothly and delicately.



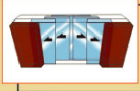
SD90-F

Specifications:

Item	FOLDING automatic door
Model	SD90-F
Controller	Micom processor
Motor	45 W Fuji Micro DC Brushless Motor
Power Supply	AC 180 ~ 220 V 50/60Hz
Dimension	150 x 170 mm
Opening Type	Single Bi-parting
Door Weight	Max 50 kg x 2 Max 50 kg x 4
Door Width	700mm x 2 700mm x 4
Opening/Closing speed	2 - 5 /s (Adjustable)



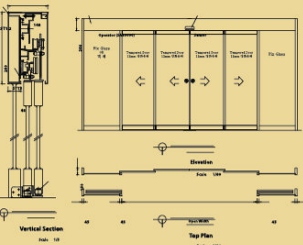
TELESCOPIC AUTOMATIC DOOR This type can provide about 50% wider opening than normal sliding type and is suitable to places requiring a maximum opening in a limited space. The door opens as smooth as a normal sliding door.



SD60-TL

Specifications:

Item	TELESCOPIC automatic door
Model	SD60-TL
Controller	Micom processor
Motor	45 W Fuji Micro DC Brushless Motor
Power Supply	AC 180 ~ 220 V 50/60Hz
Door Weight	Max 100 kgx 2 (single)
Dimension	160 x 260 mm



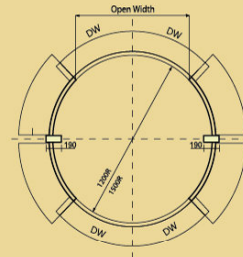
CIRCLE AUTOMATIC DOOR Circle door's outlook is beautiful and anti-wind ability is excellent. Circle door has high reputation of safety in comparison to revolving door. This type of door makes an impression of luxury around the entrance suitable for places such as banks, hotels, and other high-tech building entrances.



SD60-SC

Specifications:

Item	Circle automatic door
Model	SD60-SC
Radius	1200R ~ 1500R
Controller	Micom processor
Motor	45 W Fuji Micro DC Brushless Motor
Power Supply	AC 180 ~ 220 V 50/60Hz
Door Weight	Max 100 kg x 2
Dimension	160 x 260 mm
Opening/Closing speed	max 500mm /s (Adjustable)



Automatic System
SWICO
AUTOMATIC DOOR SYSTEM

경기도 김포시 고촌읍 신곡미 447-3
Tel. 031-985-1999 · Fax. 031-985-2333
#447-3 Singok-Ri, Gochon-Eup, Gimpo-Si, Gyeonggi-Do, Korea
Tel. +82-31-985-1999 · Fax. +82-31-985-2333

Automatic System SWICO



SWICO AUTOMATIC DOOR SYSTEM
MADE IN KOREA

SWING / SLIDING / FOLDING / CIRCLE
TELESCOPIC / ACCESS CONTROL SYSTEM



Specifications:

Model	SWICO SD-60
Motor	High Power DC 60W
Maximum door leaf (single)	130 kg
Maximum door leaf (bi-parting)	120 x 2 kg
Controller	Intelligent Micro Computer with LCD display
Power Supply	220 VAC 50/60 Hz
Rail base dimension	125 mm x 100 mm
Opening/closing speed	200 - 800 mm/s
Manual opening/closing force	<30N
Hold open time	0.5 - 13s (adjustable)



REMOTE CONTROL SET:

A : Keep Close Mode (Lock)
B : Keep Open Mode
C : Half Open Mode
D : Automatic Mode

ALUMINUM COVER

Compact, light weight, elegant look, suitable for all architectural styles

TERMINAL BOARD:

Connect motion sensor, safety beam sensor and other optional devices with 12VDC, 24VDC power supply. Easy to install and connect wiring.

INTELLIGENT MICRO COMPUTER WITH LCD DISPLAY

LCD display provides information regarding the status of the door. Adopting digital communication mode helps setup all functions of the door.

HIGH POWER 60W DC MOTOR

DC60W strong power motor can be used for a long time with high efficiency. Helical gear transmission in gear box ensures the stable and reliable operation even used for heavy door. It enables a speedy opening and closing while operating smoothly with lower noise.

Thank you for choosing and using our products: **SWICO Automatic Door**.

SWICO Automatic Door previously known as **SINIL Automatic Door** was first established in 1976. In more than 40 year of experience in manufacture of automatic doors, we have always brought you products of best stable quality.

To be the pioneer in automatic door manufacture field in Korea, we always apply the latest advanced technology achievement for the improvement and development of our products. **SWICO Automatic Door** are designed and manufactured in Korea on the foundation of safety and comfort.

We truly hope our customers will satisfy when using our products.

