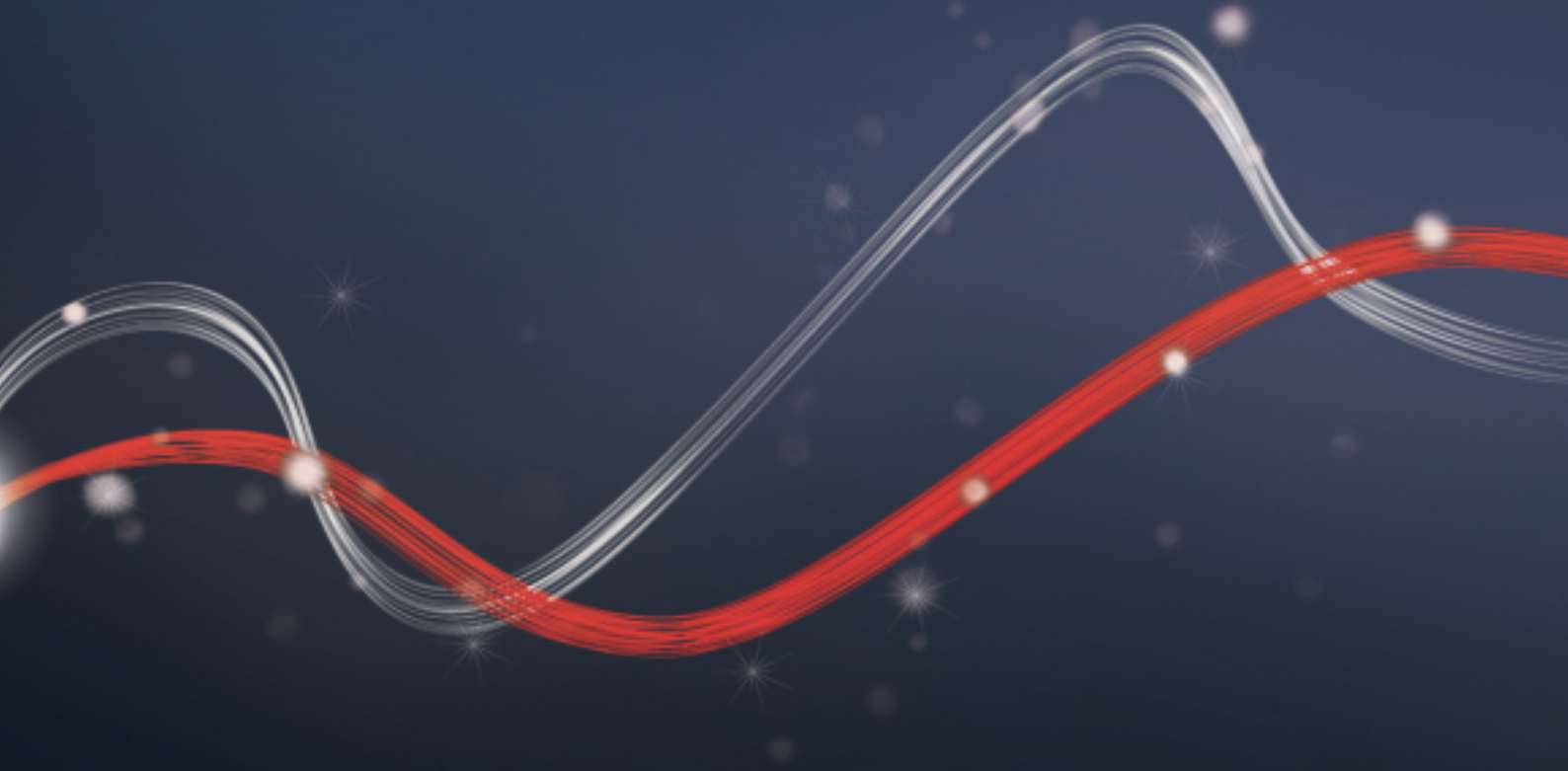




Be ahead



# LUX



## Product

PLUS

CONTROL UNIT  
TECHNICAL FEATURES

ACCESSORIES

DISCOVER U-LINK



Complete range of low voltage hydraulic pistons for very intensive use, suitable for any type of residential, industrial or multi-residence application.

Compact and sturdy, capable of automating swing gate leaves up to 5 metres wide and weighing up to 800 kg. Available in both reversible and irreversible versions, with maximum precision in torque control guaranteed by bypass valves.



Code	Name	Description
P935009 00001	LUX	Hydraulic operator reversible for hinged leaves up to 2 m and 300 kg in weight. Useful travel 270 mm, manoeuvre time 17 sec and maximum opening angle 123°. Locking system: solenoid lock
P935025 00001	LUX SA	Hydraulic operator reversible for hinged leaves up to 2 m and 300 kg in weight. Useful travel 270 mm, manoeuvre time 17 sec and maximum opening angle 123°. Locking system: solenoid lock
P935009 00025	LUX WINTER	Hydraulic operator reversible for hinged leaves up to 2 m and 300 kg in weight. Useful travel 270 mm, manoeuvre time 17 sec and maximum opening angle 123°. Locking system: solenoid lock
P935044 00001	LUX R	Hydraulic operator reversible for hinged leaves up to 2.2 m and 300 kg in weight. Useful travel 270 mm, manoeuvre time 17 sec and maximum opening angle 123°. Locking system: solenoid lock
P935044 00002	LUX RSN2	Hydraulic operator reversible for hinged leaves up to 2.2 m and 300 kg in weight. Useful travel 270 mm, manoeuvre time 17 sec and maximum opening angle 123°. Locking system: solenoid lock

## Product

PLUS

CONTROL UNIT  
TECHNICAL FEATURES

ACCESSORIES

DISCOVER U-LINK

LUX

Code	Name	Description
P935010 00001	LUX B	Hydraulic operator triangle key for hinged leaves up to 2 m and 300 kg in weight. Useful travel 270 mm, manoeuvre time 17 sec and maximum opening angle 123°. Locking system: hydraulic closing
P935027 00001	LUX BA	Hydraulic operator reversible for hinged leaves up to 2 m and 300 kg in weight. Useful travel 270 mm, manoeuvre time 17 sec and maximum opening angle 123°. Locking system: solenoid lock
P935011 00001	LUX 2B	Hydraulic operator triangle key for hinged leaves up to 2 m and 300 kg in weight. Useful travel 270 mm, manoeuvre time 17 sec and maximum opening angle 123°. Locking system: open/close hydraulics
P935011 00028	LUX 2B WINTER	Hydraulic operator triangle key for hinged leaves up to 2 m and 300 kg in weight. Useful travel 270 mm, manoeuvre time 17 sec and maximum opening angle 123°. Locking system: open/close hydraulics
P935046 00001	LUX R2B	Hydraulic operator reversible for hinged leaves up to 2 m and 300 kg in weight. Useful travel 270 mm, manoeuvre time 17 sec and maximum opening angle 123°. Locking system: solenoid lock
P935039 00001	LUX FC 2B	Hydraulic operator triangle key for hinged leaves up to 2 m and 300 kg in weight. Useful travel 280 mm, manoeuvre time 17 sec and maximum opening angle 117°. Locking system: open/close hydraulics
P935046 00002	LUX R 2B SN2	Hydraulic operator triangle key for hinged leaves up to 2 m and 300 kg in weight. Useful travel 250 mm, manoeuvre time 16+slowdown sec and maximum opening angle 101°. Locking system: open/close hydraulics
P935035 00001	LUX MB	Hydraulic operator triangle key for hinged leaves up to 2.3 m and 300 kg in weight. Useful travel 270 mm, manoeuvre time 23 sec and maximum opening angle 123°. Locking system: hydraulic closing
P935012 00001	LUX L	Hydraulic operator reversible for hinged leaves up to 4 m and 500 kg in weight. Useful travel 270 mm, manoeuvre time 33 sec and maximum opening angle 123°. Locking system: solenoid lock
P935049 00001	LUX LR	Hydraulic operator reversible for hinged leaves up to 4 m and 500 kg in weight. Useful travel 270 mm, manoeuvre time 33 sec and maximum opening angle 123°. Locking system: solenoid lock
P935013 00001	LUX G	Hydraulic operator reversible for hinged leaves up to 5 m and 800 kg in weight. Useful travel 390 mm, manoeuvre time 48 sec and maximum opening angle 130°. Locking system: solenoid lock
P935014 00001	LUX GV	Hydraulic operator reversible for hinged leaves up to 3.5 m and 300 kg in weight. Useful travel 270 mm, manoeuvre time 17 sec and maximum opening angle 123°. Locking system: solenoid lock
P935014 00002	LUX GV-B	Hydraulic operator reversible for hinged leaves up to 3.5 m and 300 kg in weight. Useful travel 270 mm, manoeuvre time 17 sec and maximum opening angle 123°. Locking system: solenoid lock
P935014 00005	LUX GV-2B	Hydraulic operator reversible for hinged leaves up to 3.5 m and 300 kg in weight. Useful travel 270 mm, manoeuvre time 17 sec and maximum opening angle 123°. Locking system: solenoid lock
P935050 00001	LUX GV-R	Hydraulic operator reversible for hinged leaves up to 3.5 m and 300 kg in weight. Useful travel 270 mm, manoeuvre time 17 sec and maximum opening angle 123°. Locking system: solenoid lock
R935217 00002	KIT LUX MB	Kit for swing gates up to 2.3 m, 300 kg in weight. Hydraulic operators with useful travel 270 mm, max angle 123°, locking hydraulic closing and release triangle key. Cycle time 23 sec. Power input 250 W.

· Product

· **PLUS**

· CONTROL UNIT  
· TECHNICAL FEATURES

· ACCESSORIES

· **DISCOVER U-LINK**

## PLUS



All-aluminium structure with high-resistance anodising treatment.



The by-pass valves, in the 230V versions, allow the exact setting of the torque separately and independently for opening and closing.



The slowdown during closing (R versions) guarantees silent, smooth movements on even the biggest gates. Also, the adjustment screw makes it possible to adapt the slowdown intensity to needs of each situation.

• Product

• PLUS

• **CONTROL UNIT**  
• **TECHNICAL FEATURES**

• ACCESSORIES

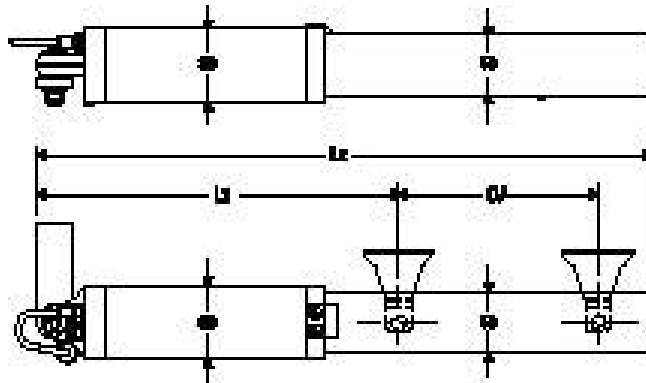
• **DISCOVER U-LINK**

## ALCOR N D113706 00002 Recommended

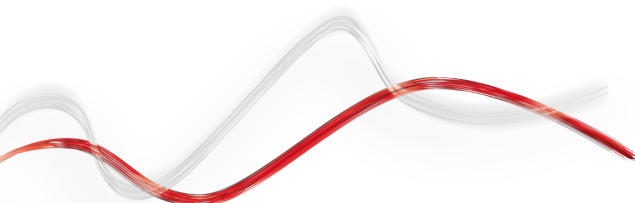
### Control panel with dip switches and potentiometers for one or two 230V/300W operators for swing gates



- Compatibility: ALCOR SD
- Application: control panel for one or two swing gate operators
- Board power supply: 230V single-phase
- Operators power supply: 230V single-phase 300W max each operator
- Main features: removable terminal blocks, settings controlled by potentiometers, fault signalling LEDs and incorporated dual channel receiver
- Main functions: stays locked when closed, 3/4 step logic, partial opening, separate opening/closing



	LUX	LUX SA	LUX WINTER	LUX R	LUX RSN2	LUX B	LUX BA	LUX 2B	LUX 2B WINTER	LUX R2B	LUX FC 2B	LUX R 2B SN2	LUX MB	LUX L	LUX LR	LUX G	LUX GV	LUX GV-B	LUX GV-2 B	LUX GV-R
Control unit	ALCOR N, RIGEL5																			
Motor power supply	230 V																			
Power input	250 W										280 W		250 W							
Slowdown	no												yes		no					
Impact reaction	hydraulic clutch																			
Frequency of use	very intensive																			
Environmental conditions	from -10 °C to 60 °C		from -30 °C to 60 °C		from -10 °C to 60 °C						from -30 °C to 60 °C		from -10 °C to 60 °C							
Protection rating	IP57																			



• Product

• PLUS

• CONTROL UNIT  
• TECHNICAL FEATURES

• **ACCESSORIES**

• DISCOVER U-LINK

	Code	Name	Description
	D113680 00002	<b>ALPHA SD</b>	Universal control panel with potentiometers for one 230V/500W single-phase operator
	D113693 00003	<b>RIGEL 5</b>	Universal control panel with display for one or two 230V - 600+600W operators
	D113706 00002	<b>ALCOR N</b>	Control panel with dip switches and potentiometers for one or two 230V/300W operators for swing gates
	P111528	<b>THEA A15 O.PF</b>	Pair of adjustable photocells with integrated flashing light. Possibility of directing the beam 40 ° horizontally and 10 ° vertically. IR signal synchronised to prevent any risk of blinding. Range 30 m. Power supply 24 V ac/dc. For external application.
	P111714	<b>THEA A15 O.PF UNI</b>	
	N190104	<b>BIR C</b>	Rubber safety edge (H 30 mm), price per m
	P111401 00001	<b>VENTIMIGLIA NS</b>	Infrared device for BIR C or BAR C safety edges (conforms to EN 12978 Standard)
	N733426	<b>ARB LUX</b>	Pair of front and rear adjustable brackets for LUX operator - ARB LUX
	N733474	<b>ARB LUX G</b>	Adjustable front and rear bracket for LUX G operator
	D730178	<b>PLE</b>	Anchor plate for welding the mountings to masonry pillars for LUX and PHOBOS N operators
	N999131	<b>NAT</b>	Adapter for 230V hydraulic operators for inserting the spiral cable protection sheath
	P123026	<b>B 00 R01</b>	Metal guard for B LTA
	P123025	<b>B 00 R02</b>	Wall mounting for B LTA series flashing beacons
	D111904	<b>MITTO B RCBO2 R1</b>	Transmitter with 2 channels. Range 50/100 m. Power supply 12 V with 1 battery type 23 A

• Product

• PLUS

• CONTROL UNIT  
• TECHNICAL FEATURES

• **ACCESSORIES**

• DISCOVER U-LINK

	Code	Name		Description
	P121024	<b>Q.BO TOUCH</b>		Wireless digital touchpad with 433MHz rolling code operation. Manages up to 10 channels and 100 codes.
	P121022	<b>Q.BO KEY WM</b>		Key selector for outdoor use with double contact. Key selector for outdoor use with double contact.
	P121023	<b>Q.BO KEY WM AV</b>		Vandalproof key selector with double contact, for outdoor use. Metal structure. Vandalproof key selector with metal structure. Vandalproof key selector with double contact, for outdoor use. Metal structure.
	D121016	<b>ECB DX</b>		Right-hand horizontal solenoid lock, 12-24V
	D121017	<b>ECB SX</b>		Left-hand horizontal solenoid lock, 12-24V
	D121018	<b>ECB VERTICALE</b>		Vertical solenoid lock, 12-24V
	P111526	<b>DESME A15</b>		Pair of self-aligning photocells. Range 30 m. Power supply 24 V ac/dc. Pair of self-aligning photocells. Range 30 m. Power supply 24 V ac/dc.
	P903018	<b>PHP</b>		Pair of aluminium posts for THEA/DESME series photocells Height 522 mm
	P123001 00001	<b>EBP</b>		EBP 230Vac electric drop lock
	P123006 00001	<b>EBPE 52</b>		230Vac solenoid lock with zero stop resistance, also with release from outside for gates of max thickness 50 mm
	P123008 00001	<b>EBPE 75</b>		230Vac solenoid lock with zero stop resistance, also with release from outside for gates of max thickness 75 mm
	P123001 00013	<b>EBP 24</b>		24Vac solenoid lock, with 230/24V transformer installable in control panel
	D111013	<b>ME</b>		Control board for 12Vac solenoid lock for 230V automation systems Control board for 12Vac solenoid lock for 230V automation systems
	P111052	<b>CM1700</b>		Mechanical safety edge, length 1.7 m
	P111053	<b>CM2000</b>		Mechanical safety edge, length 2 m



• Product

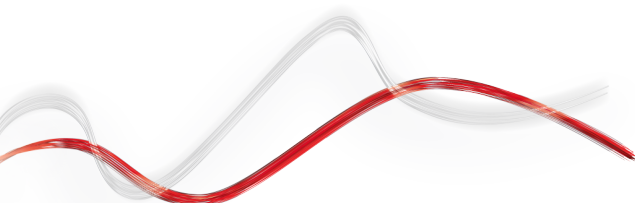
• PLUS

• CONTROL UNIT  
• TECHNICAL FEATURES

• **ACCESSORIES**

• DISCOVER U-LINK

	Code	Name	Description
	D113748 00002	<b>RADIUS B LTA 230 R1</b>	Flashing light with incorporated antenna for motors with power supply 230 V.
	D113749 00002	<b>RADIUS B LTA 230 R2</b>	Flashing light without incorporated antenna for motors with power supply 230 V.
	D831081	<b>CMS</b>	Sign





· Product

· PLUS

· CONTROL UNIT  
· TECHNICAL FEATURES

· ACCESSORIES

· DISCOVER U-LINK

## What is U-Link?

The innovative technology that gives you new power

An exclusive Bft innovation: U-Link (Universal Link) is an exclusive Bft platform that allows the creation of technological ecosystems. In Home Automation Access, it allows communication with all the home access automation devices of any brand. So you save time and can control everything with ease, without any worries.

### It is intuitive

Easy to install and use

### It is scalable

Allows an unlimited number of devices to be added

### It is flexible

Allows the creation of groups of interconnected products

### It is practical

Works with or without a web connection

### It is functional

Parameters can be controlled remotely via dedicated applications

• Product

• PLUS

• CONTROL UNIT  
• TECHNICAL FEATURES

• ACCESSORIES

• **DISCOVER U-LINK**

## All in one scheme: discover this amazing technology

A unique platform **allowing the creation of technological ecosystems** offering a wide range of solutions for different sectors.

Thanks to the B-Eba cards and the Clonix U-Link receiver, this proprietary platform featured by Bft products adapts to any protocol and access automation product (even BFT, non-native U-Link or non-BFT products), and is used in various sectors. Each device thus becomes smart and can be interconnected with other systems, thanks to a language that becomes universal.

### U-Base 2



Software to install and easily and comfortably carry out maintenance and identify any malfunction of U-link compatible operators.

### U-SDK



U-SDK is the innovative application that can make Bft automation systems compatible and easily integrated with a BMS network for the supervision of buildings.



### Magistro

An innovative and easy to install system for easily managing all home automation systems.



### U-Control

U-Control is the application that helps the quick and easy integration of BFT automation systems in large building management systems.



### Blue-Entry

Technology abreast of the times and attentive to daily needs: thanks to the use of U-link the house gate can now be opened with just your smartphone.



### Clonix U-Link

Allows the connection of non-native U-Link products or non-Bft products to U-Link systems.

Bft operators, non-native U-Link products or a product belonging to other brands: can they be connected to U-Link? Yes, thanks to the Clonix receivers. Accessories that know no limits.

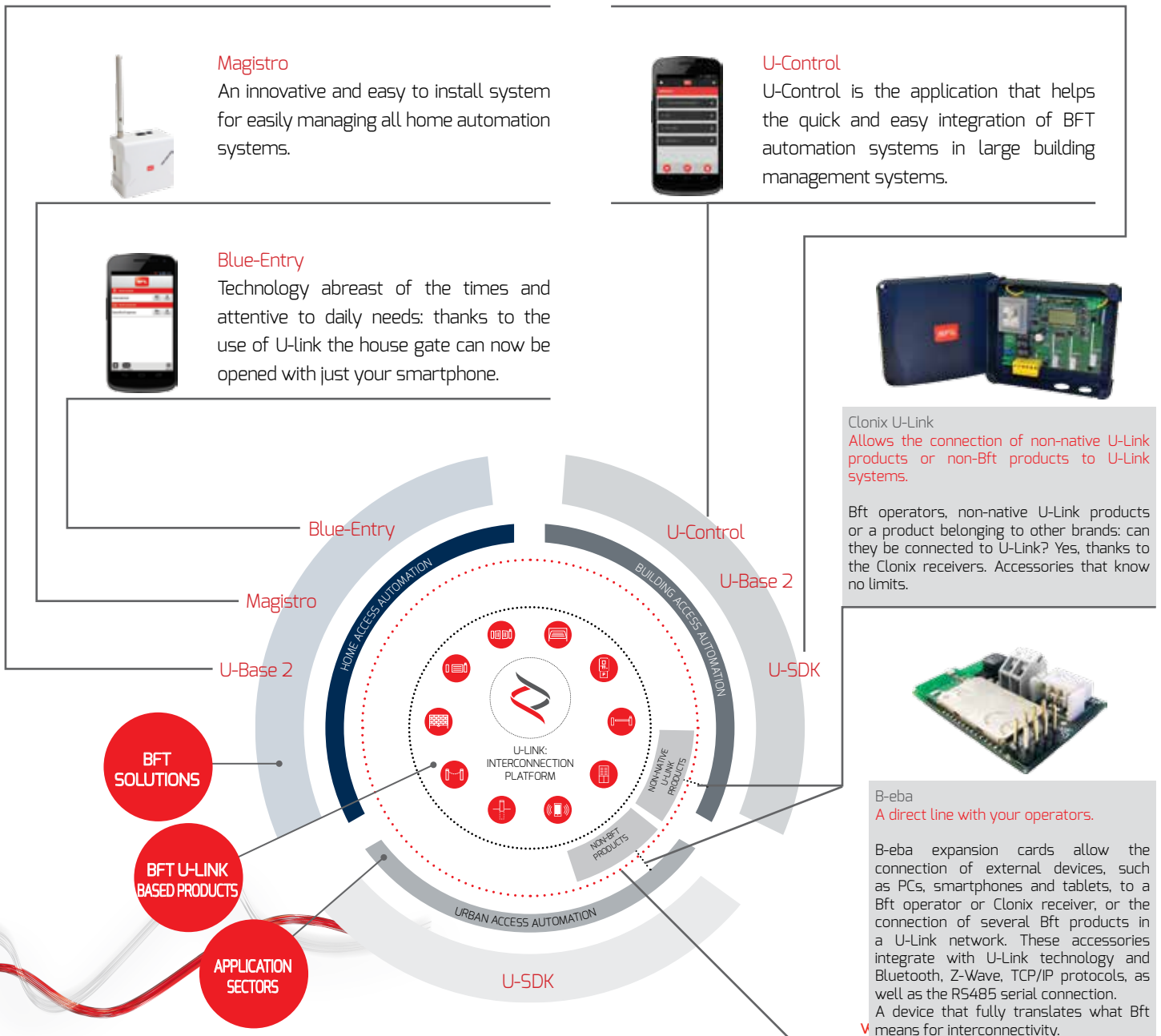


### B-eba

A direct line with your operators.

B-eba expansion cards allow the connection of external devices, such as PCs, smartphones and tablets, to a Bft operator or Clonix receiver, or the connection of several Bft products in a U-Link network. These accessories integrate with U-Link technology and Bluetooth, Z-Wave, TCP/IP protocols, as well as the RS485 serial connection.

A device that fully translates what Bft means for interconnectivity.





INFORMATION REGARDING THE PROTECTION OF THE INDUSTRIAL AND INTELLECTUAL PROPERTY RIGHTS OF BFT. BFT S.p.A. protects its industrial property by depositing trademarks, patents, models and designs. The intellectual property of BFT S.p.A. is protected by copyright law. BFT S.p.A. also protects its know-how by taking measures to protect the technical and commercial information inherent in its company and products. All the products in this catalogue are ORIGINAL BFT MODELS and only BFT S.p.A is authorised to produce them and market them anywhere in the world. All the commercial names in this catalogue are owned by BFT S.p.A., and only BFT S.p.A. is authorised to use them in relation to the corresponding merchandise category. FALSIFIERS WILL BE PROCEEDED AGAINST IN ACCORDANCE WITH BOTH CIVIL AND CRIMINAL LAW. THESE CONDITIONS NOT ONLY GUARANTEE THE INTELLECTUAL PROPERTY RIGHTS OF BFT, BUT ALSO PROTECT CUSTOMERS BY GUARANTEEING THAT THE PRODUCTS THEY ARE PURCHASING ARE ORIGINAL BFT PRODUCTS RESULTING FROM STUDIES AND DESIGNS WITHIN THE BFT COMPANY.